

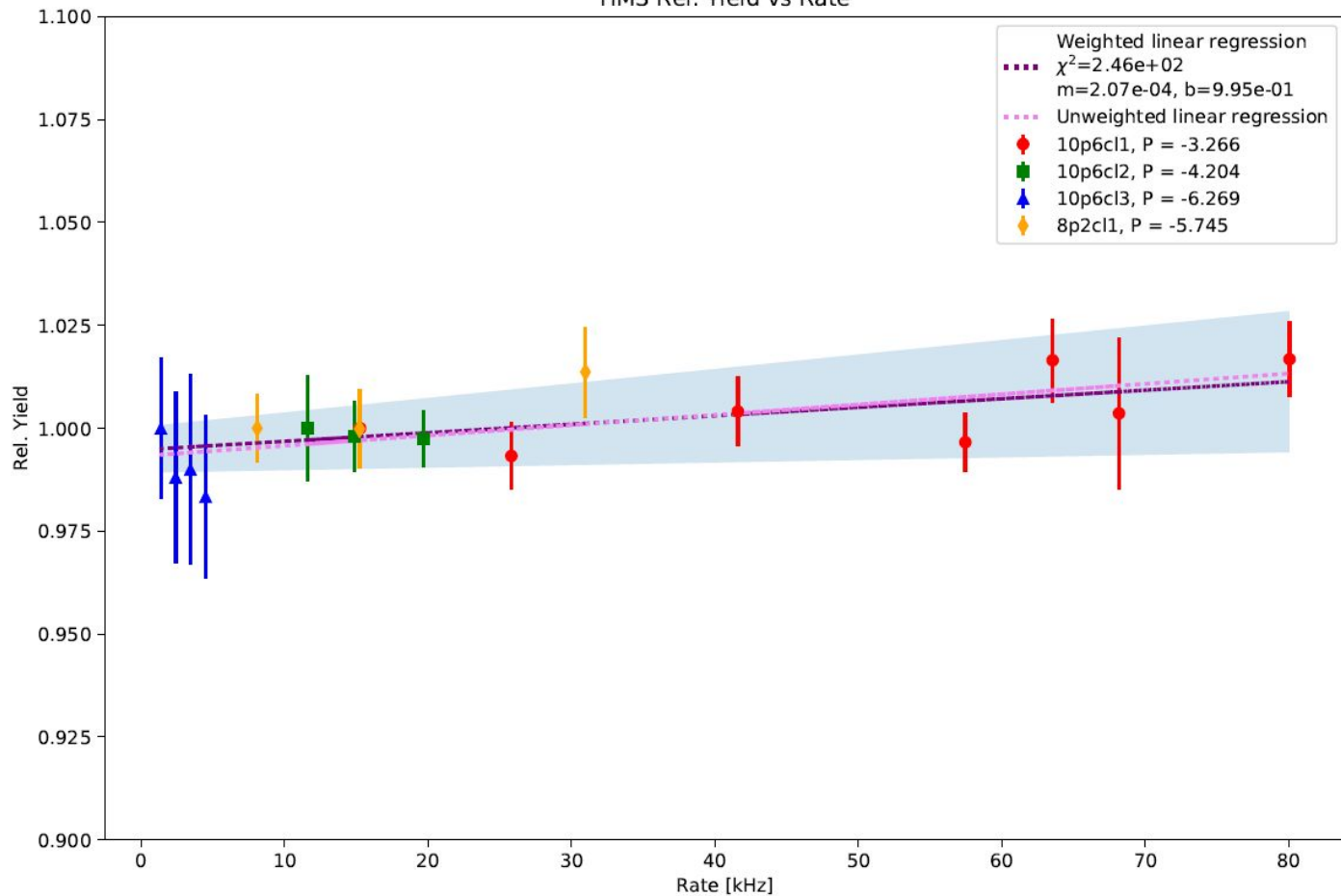


# Kaon LT Status Update

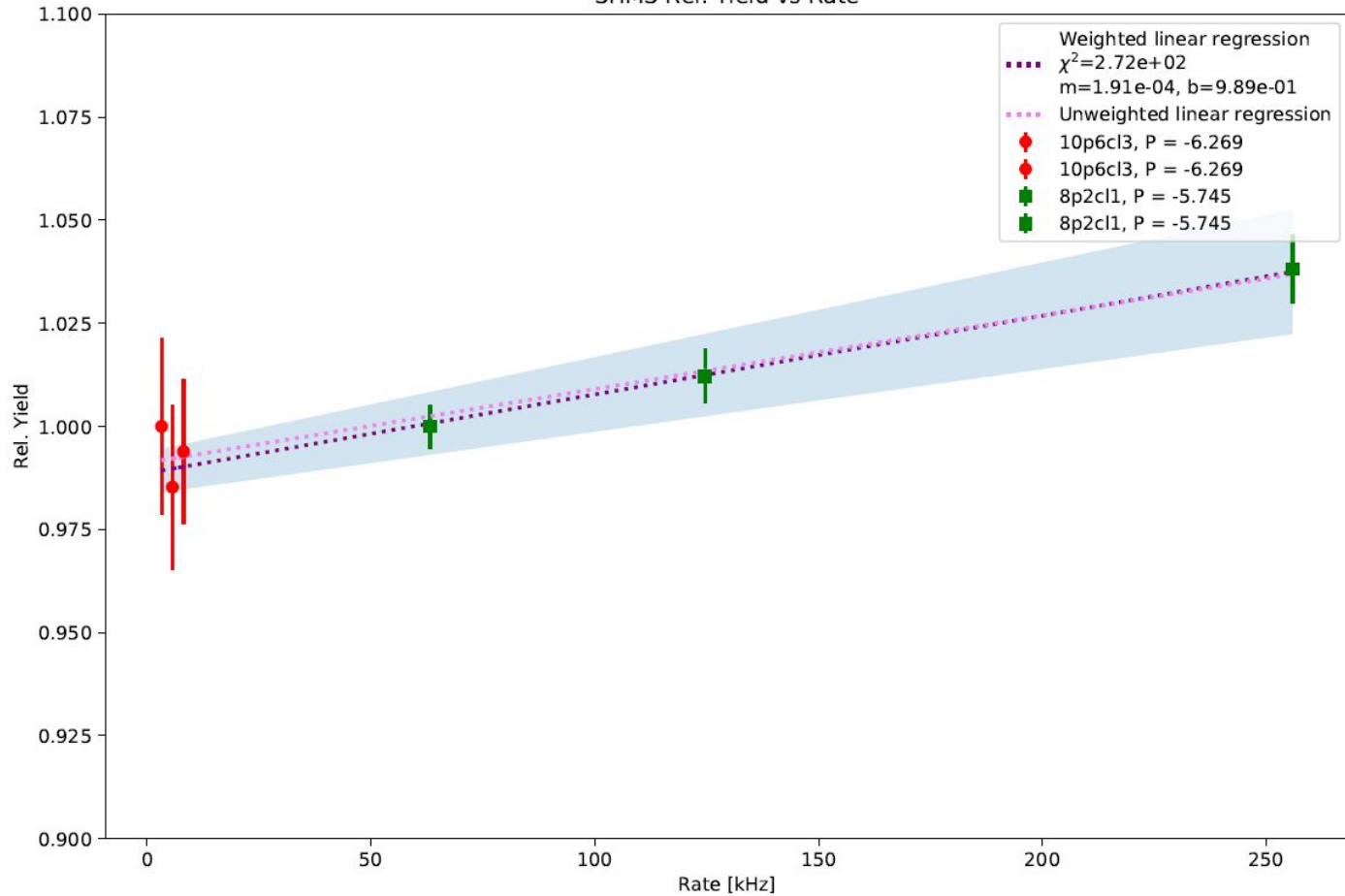
June 1st, 2023

Richard Trotta

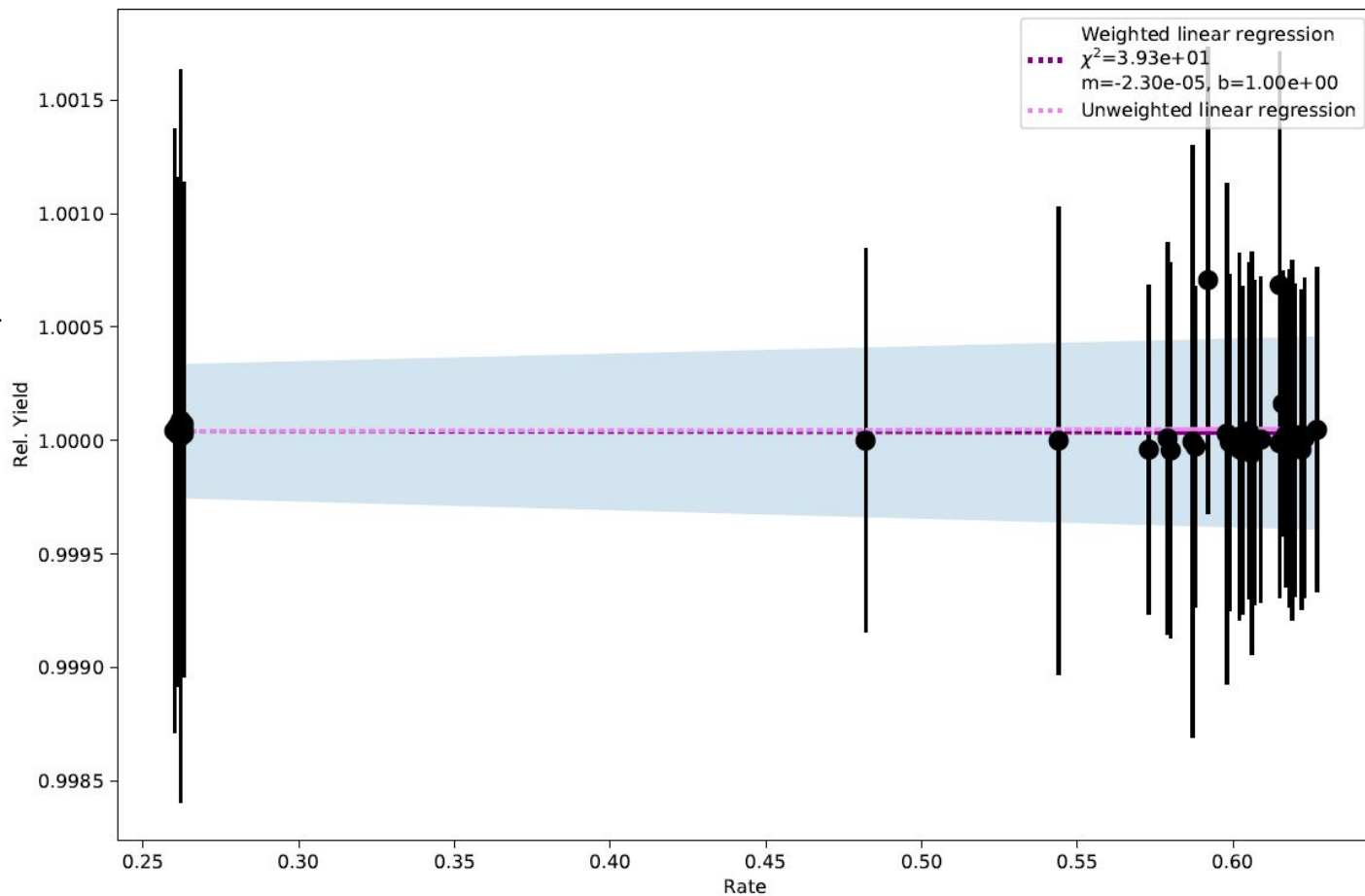
HMS Rel. Yield vs Rate



SHMS Rel. Yield vs Rate



Rel. Yield vs Rate



$Q^2 = 3.0, W=3.14$   
 $E = 8.2 \text{ GeV}$   
 $P_{\text{SHMS}} = 6.053$   
 $\Theta_{\text{SHMS}} = 6.910$   
 $P_{\text{HMS}} = -1.821$   
 $\Theta_{\text{HMS}} = 25.895$