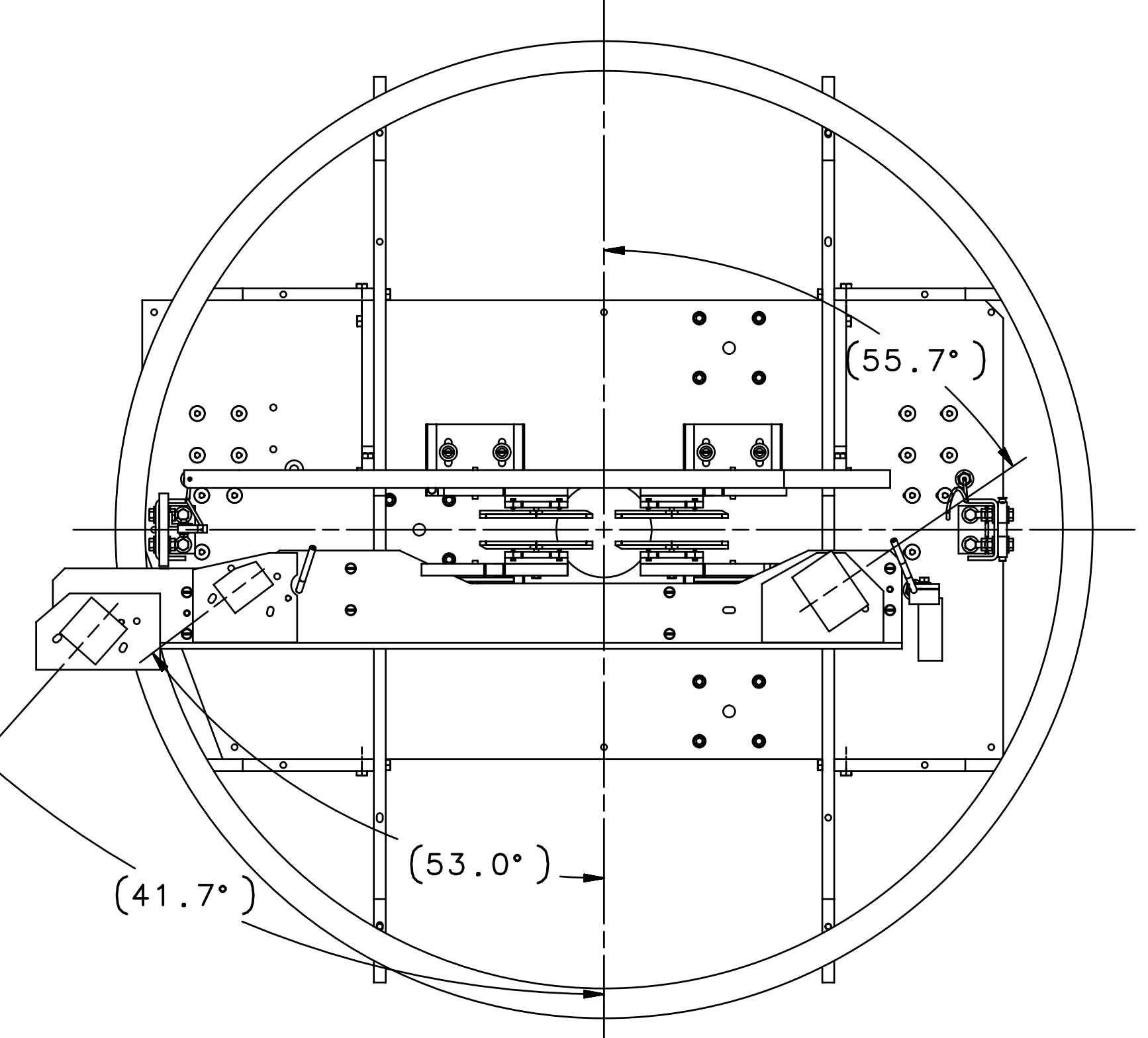
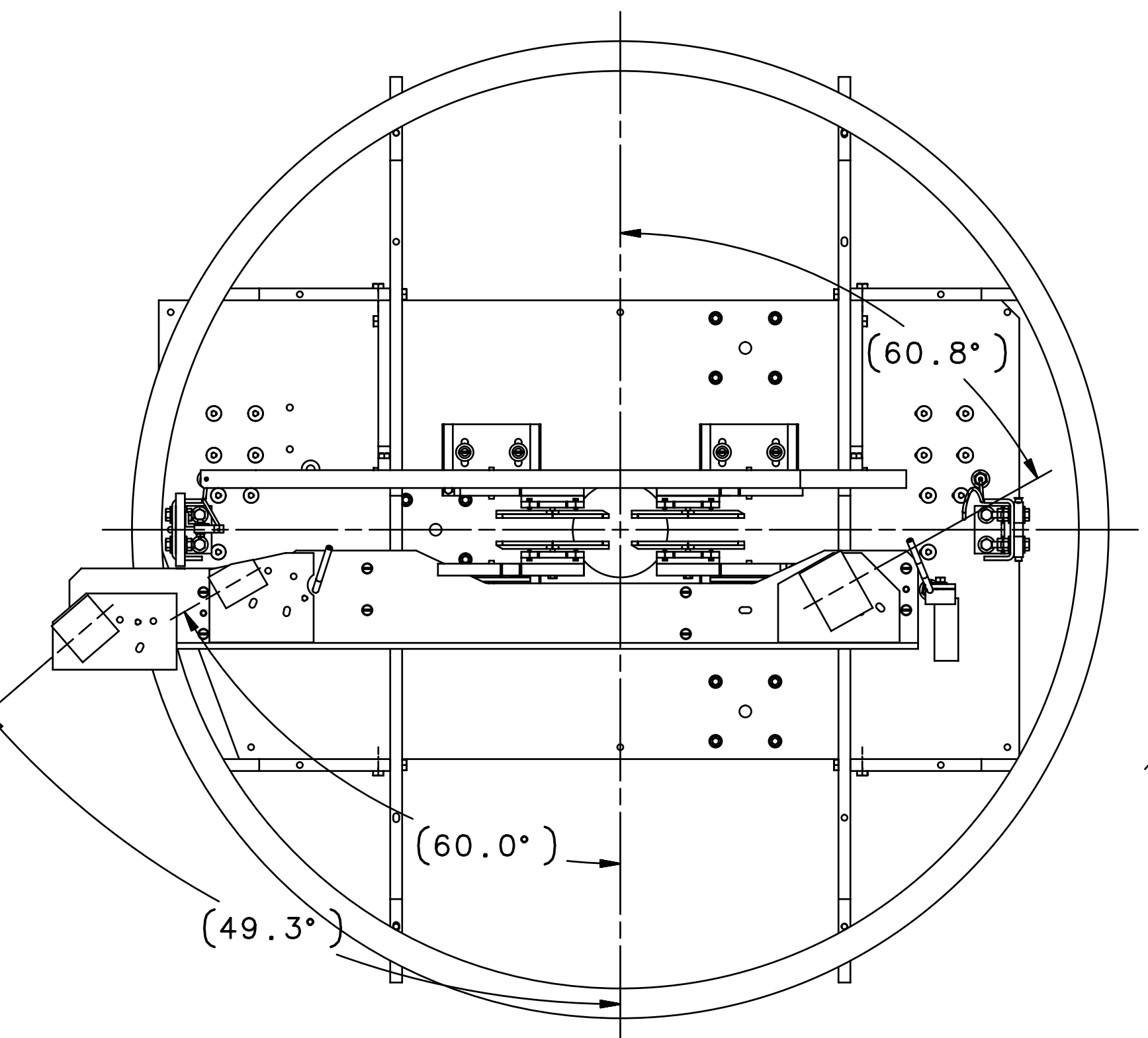
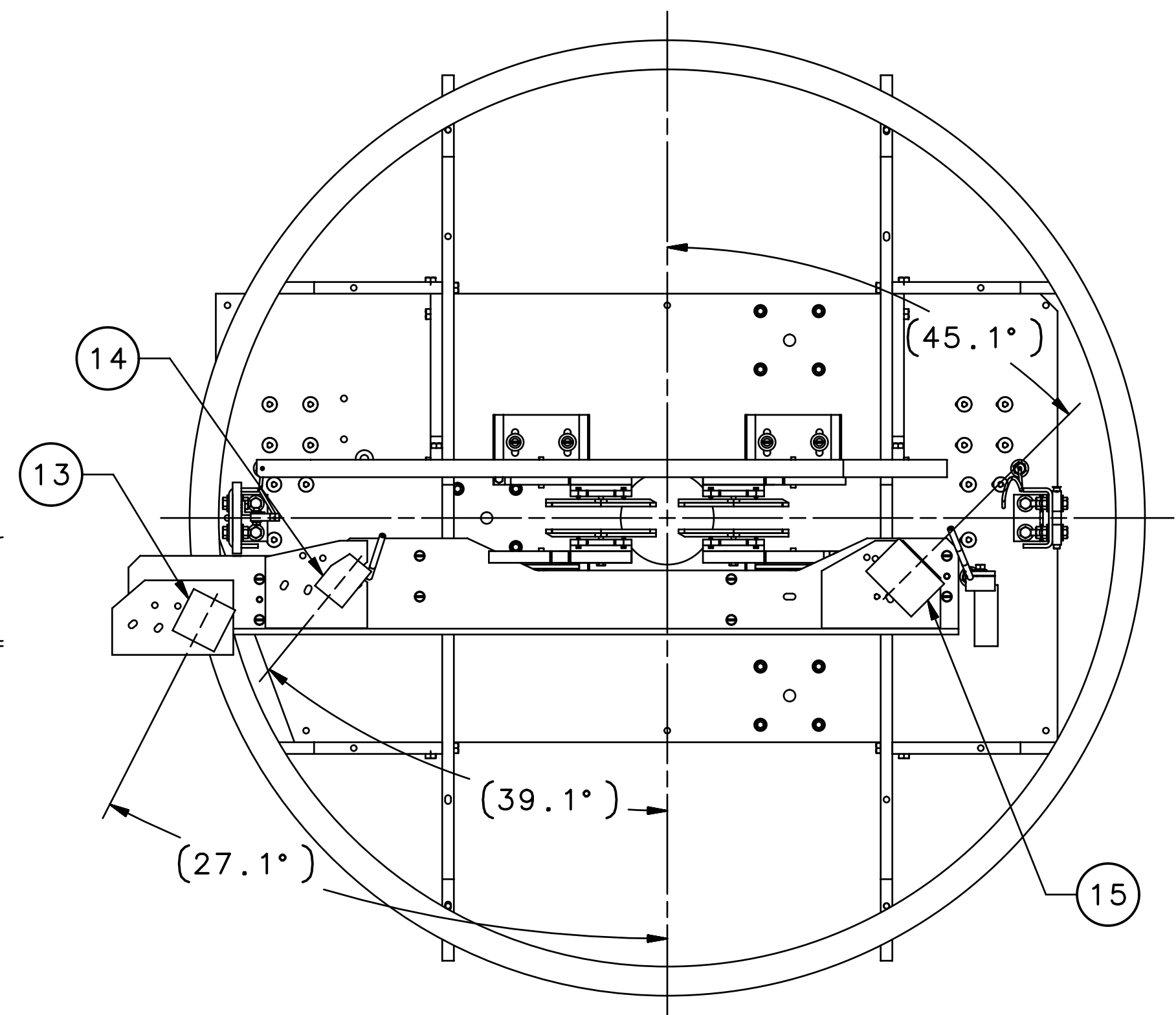
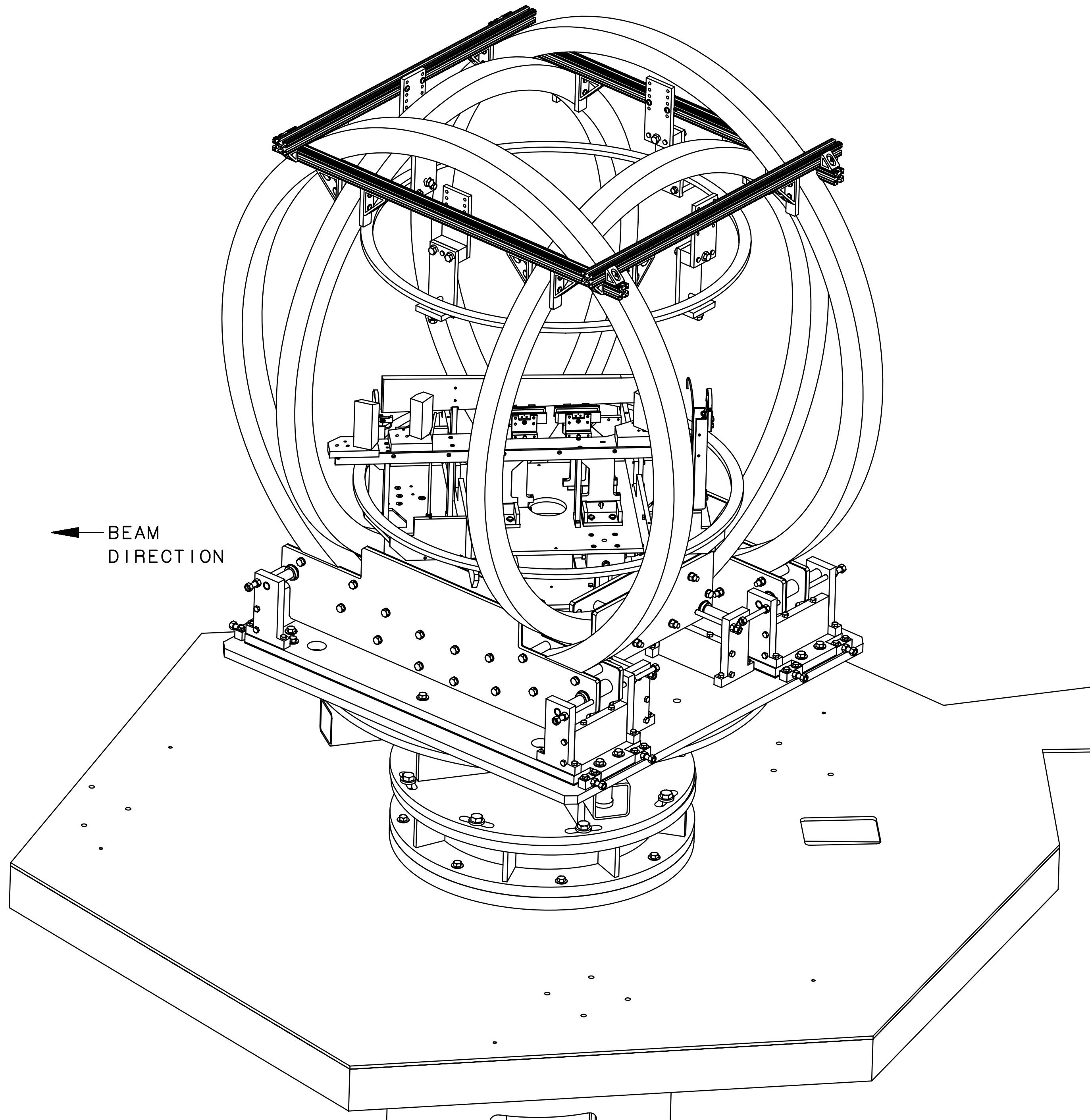
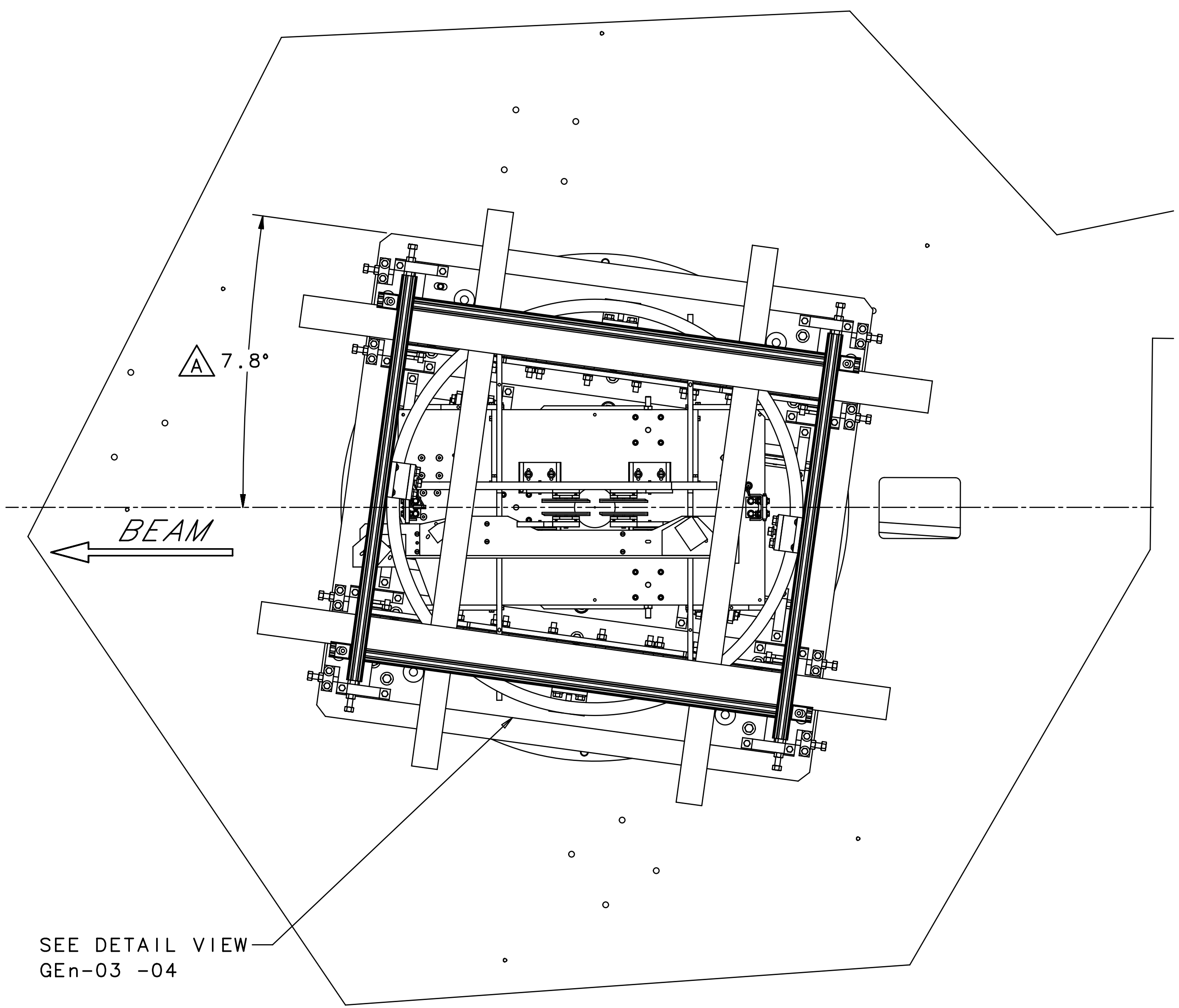
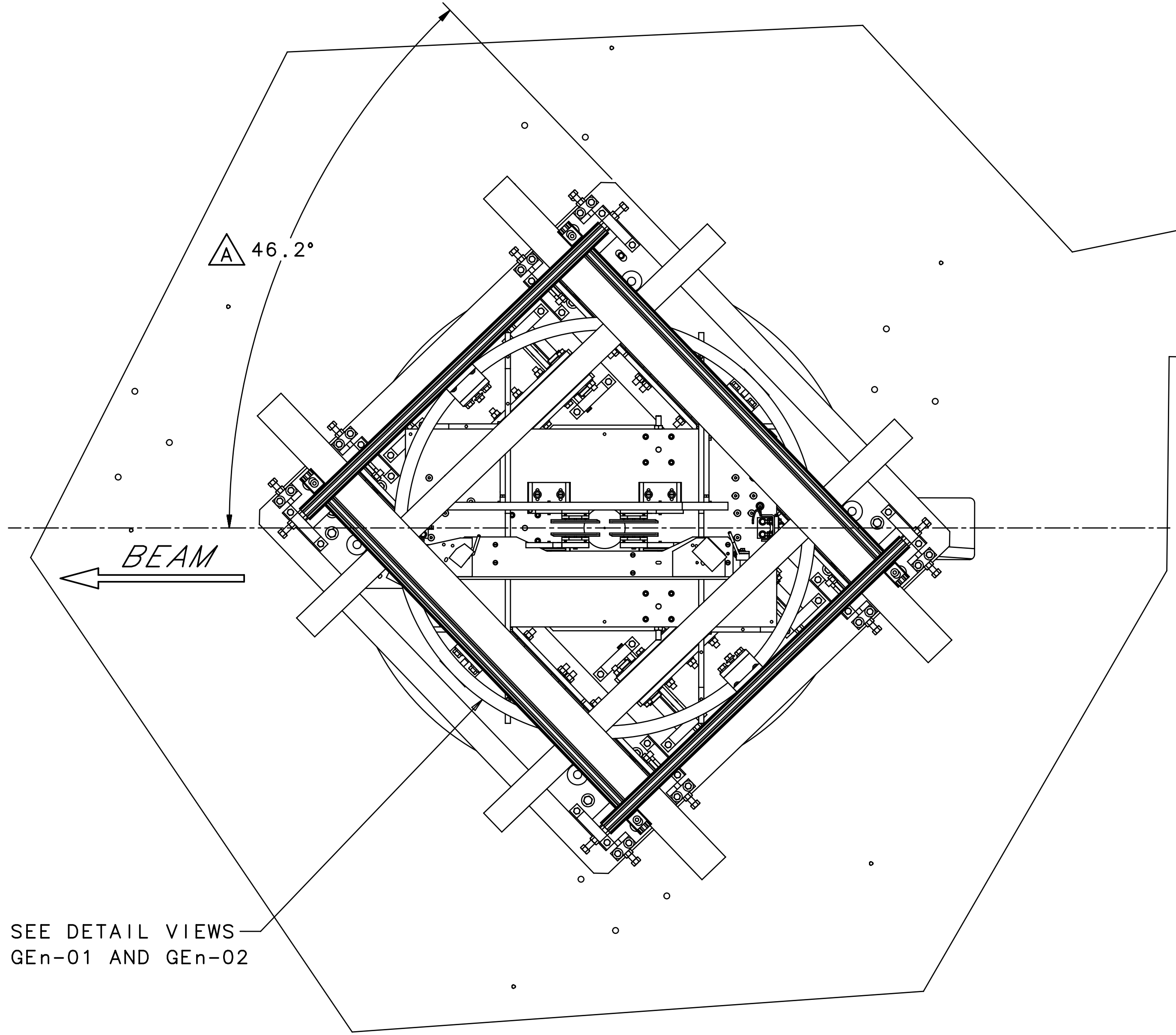


ZONE		REV	DESCRIPTION	DATE/REVISOR
ALL	A		ADDED: ITEMS 13 THRU 15. DELETED: ITEMS A09016-03-06-0211, -0212, -0213, AND -0214. REVISED: EXPERIMENT CONFIGURATIONS WERE GEN 1.46, 3.68, 6.77 AND 10.18. ALSO, COIL ANGLES WERE 10.0 AND 43.5 DEGREES.	2022.03.28 C.SOOVA



NOTE:
1. SHIELD BLOCK LOCATIONS UTILIZE PIN HOLES AND SLOTS, WHICH ARE IDENTIFIED ON DRAWING A09016-03-06-0200 FOR EACH KINEMATICS.



QTY	ITEM NO.	PART OR IDENTIFYING NO.	DESCRIPTION	MATERIAL	NOTES
1	15	A09016-03-08-0003	SHIELD BLOCK 3 - US	TUNGSTEN	-
1	14	A09016-03-08-0002	SHIELD BLOCK 2 - DS	TUNGSTEN	-
1	13	A09016-03-08-0001	SHIELD BLOCK 1 - DS	TUNGSTEN	-
1	12	A09016-03-06-0100	PU COIL-COLIM-DUMP-ASSY	-	-
2	11	A06010-03-06-0107	RF COIL LGE 38.50 ID x 41.00 OD	-	-
2	10	A09016-03-06-0800-02	RF COIL MOUNT ASSY LONG	-	-
2	9	A09016-03-06-0800-01	RF COIL MOUNT ASSY SHORT	-	-
1	8	67507-00072	RF MOUNT ASSY	-	-
1	7	67507-00062	54.75 MAG COIL MT SUBASSY MODIFICATION	-	-
8	6	-	WASHER 3/4 (1.63 OD x 1/4 THK)	STAINLESS STEEL	-
8	5	-	HEX BOLT 3/4-10 x 2.50" LG.	STAINLESS STEEL	-
1	4	65640-54460-00	MOUNT SUBASSEMBLY	-	-
8	3	-	WASHER 1/2 (1.25 OD)	STAINLESS STEEL	-
8	2	-	HEX BOLT 1/2-13 x 2.00" LG.	STAINLESS STEEL	-
1	1	A09016-03-07-0100	ADAPTER SPOOL	-	-

UNITED STATES DEPARTMENT OF ENERGY
Jefferson Lab
HALL A - A09016 - GEN (SBS)
TARGET SYSTEM
STATIC/HELMHOLTZ SUBSYSTEM ASSY

SEE PARTS LIST

THIRD ANGLE PROJECTION

FINISH: MACHINED SURFACES DEBUR & BREAK ALL SHARP EDGES

UNLESS OTHERWISE NOTED

DO NOT SCALE DRAWING

DRAWN: METZGER

DATE: 5/15/19

SCALE: N/A

REV. A

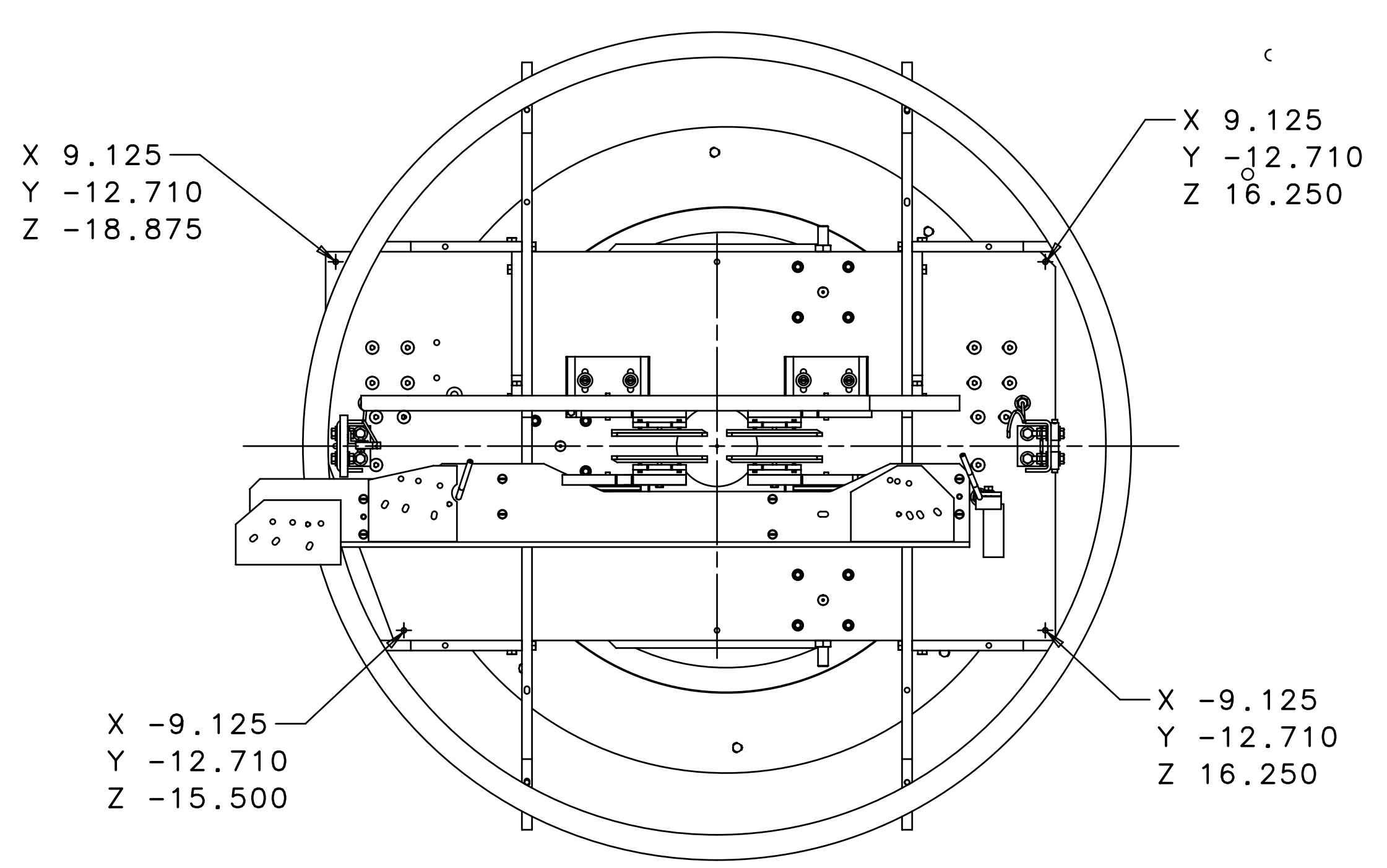
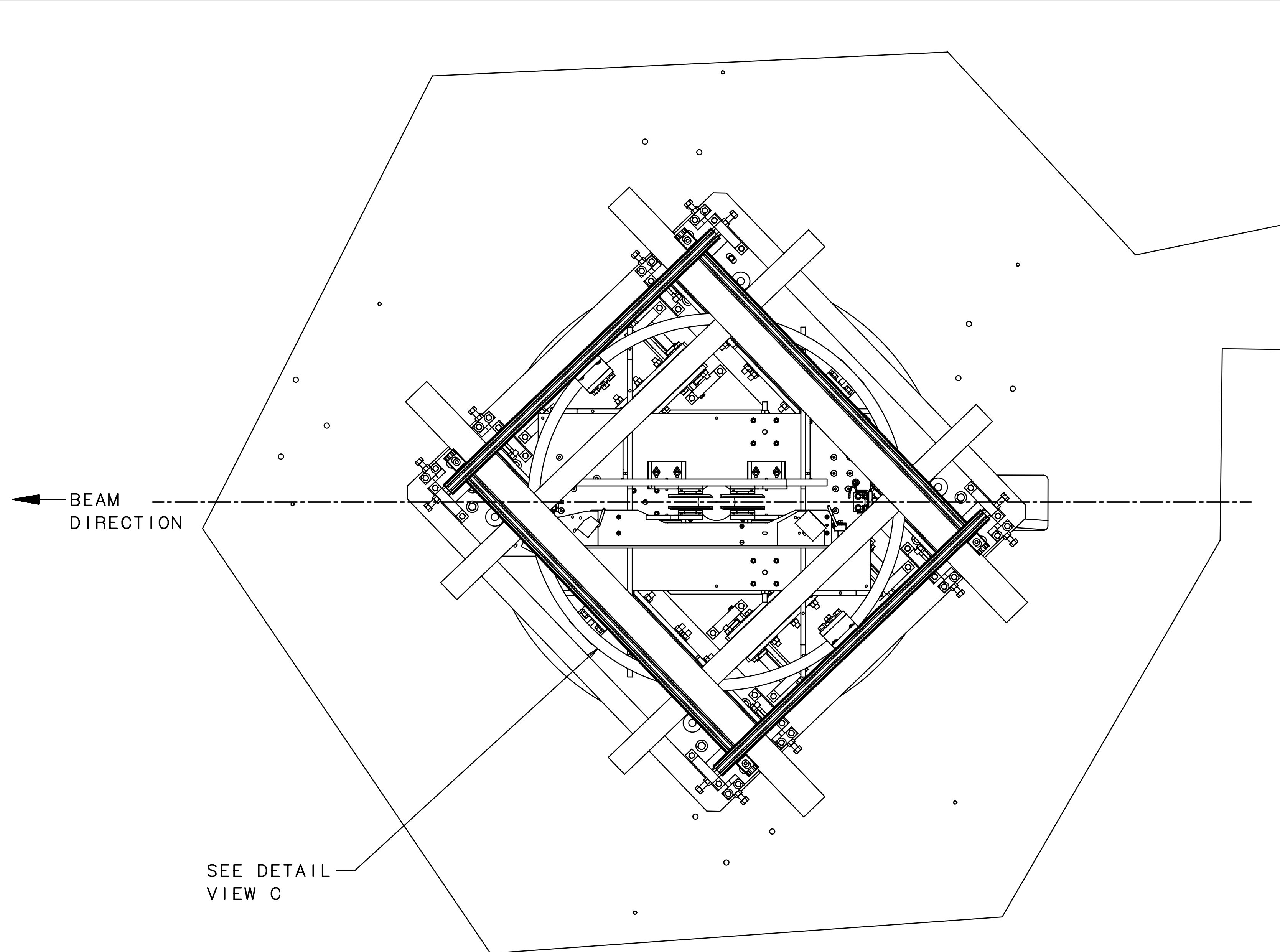
SIZE: A

DWG. NO.: A09016-03-08-0000

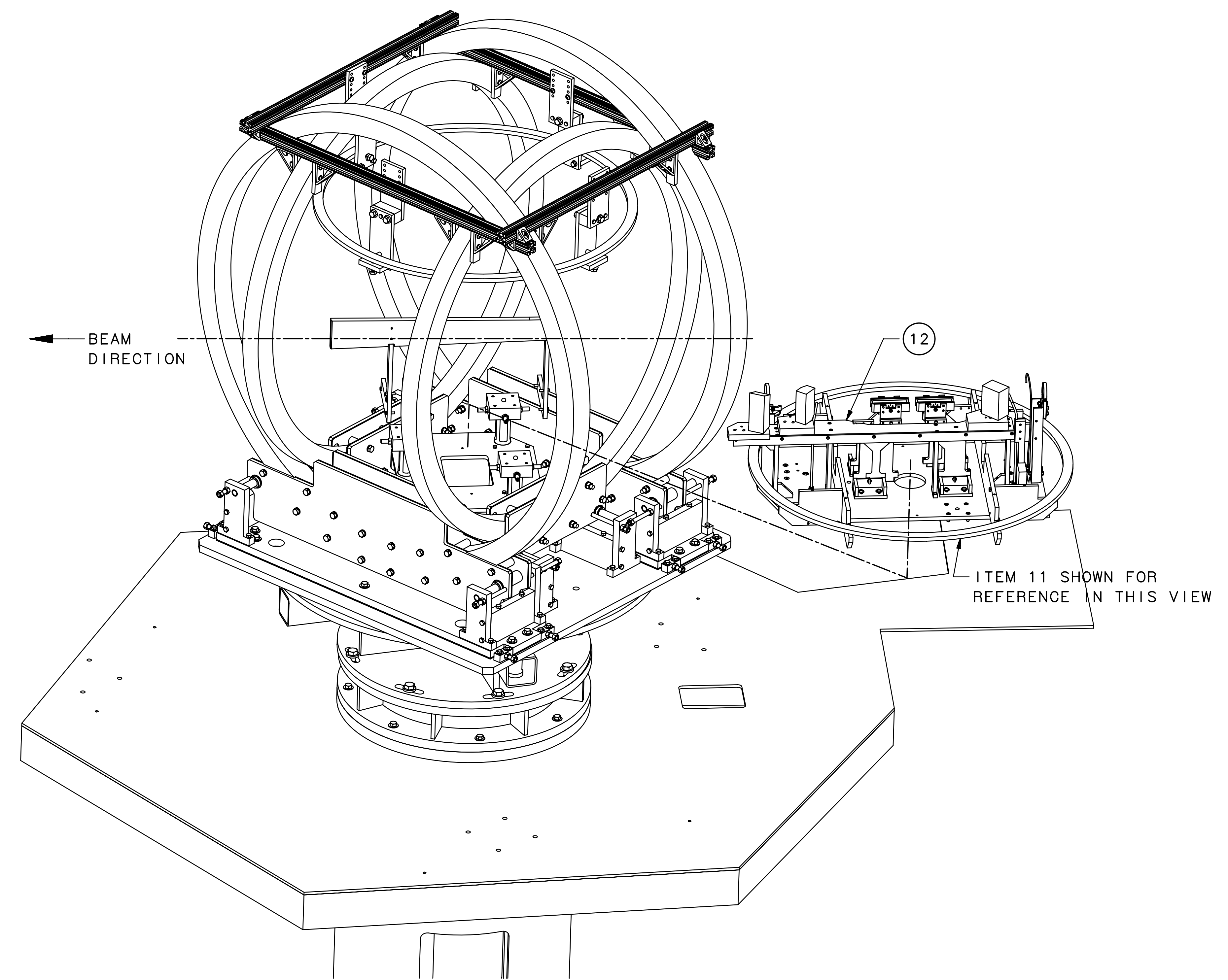
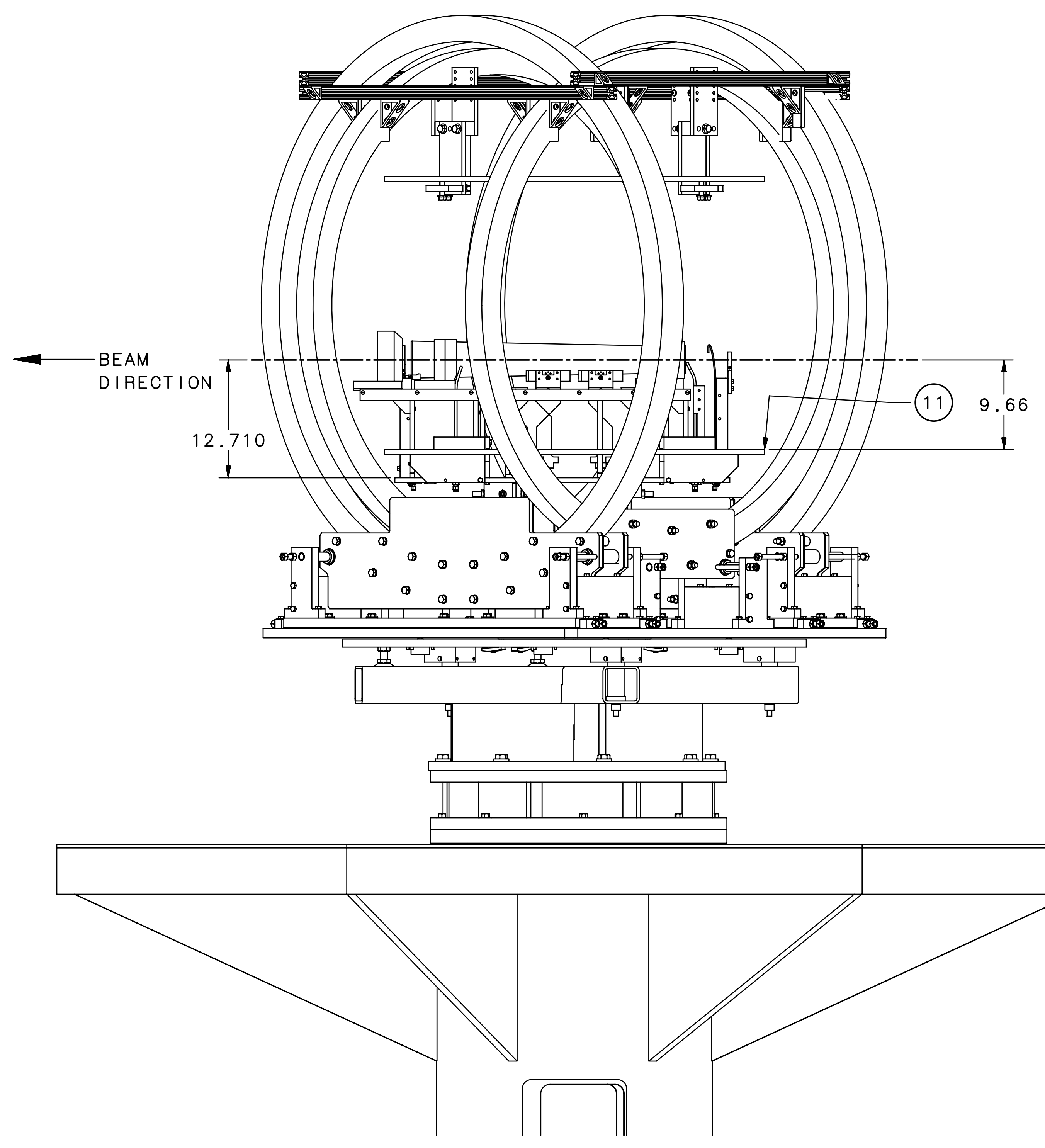
SHEET 1 OF 4

In accordance with the Jefferson Lab ESH&Q manual
Subject Matter Expert(SME) signatures may be required

8 7 6 5 4 3 2 1



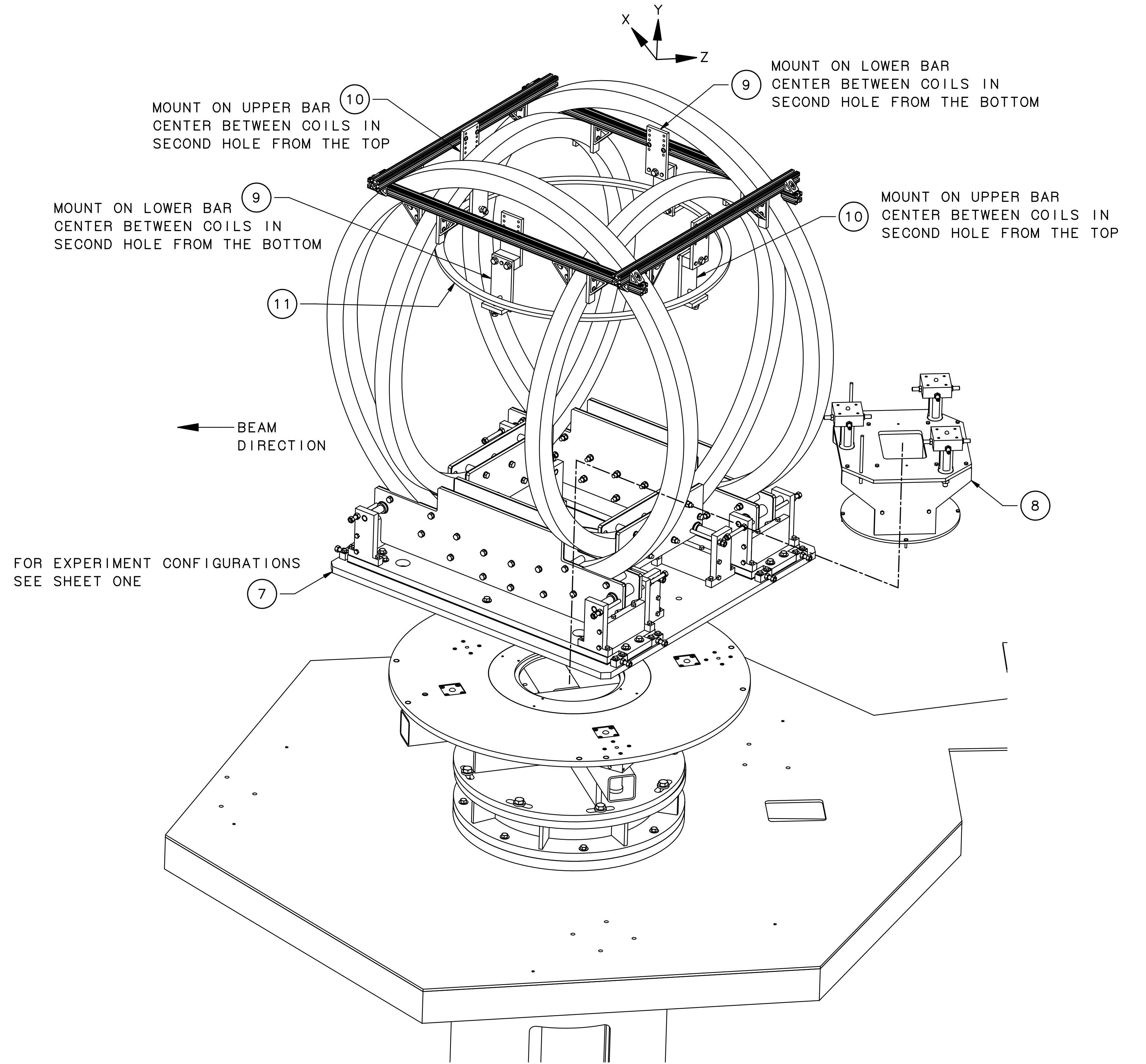
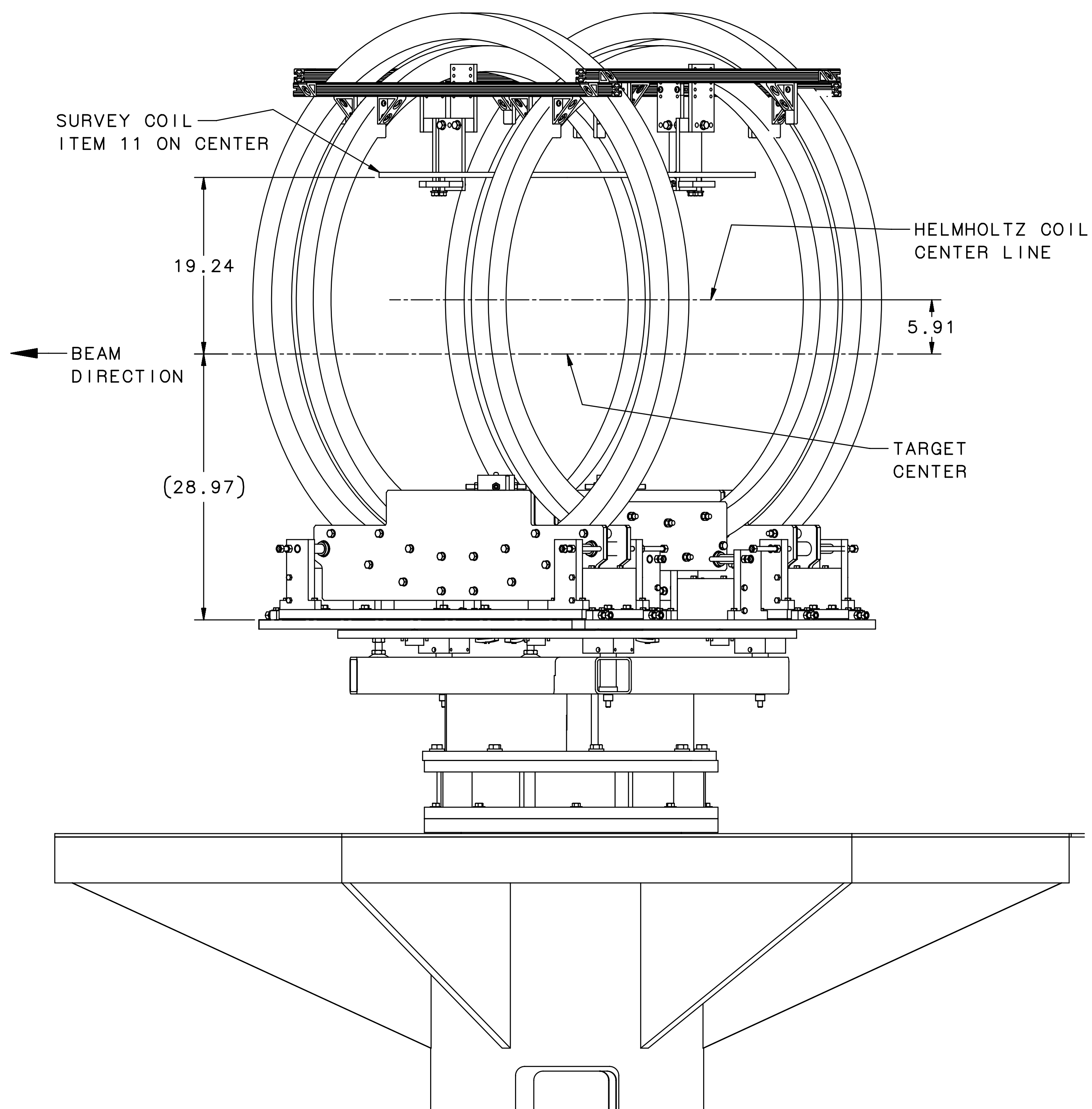
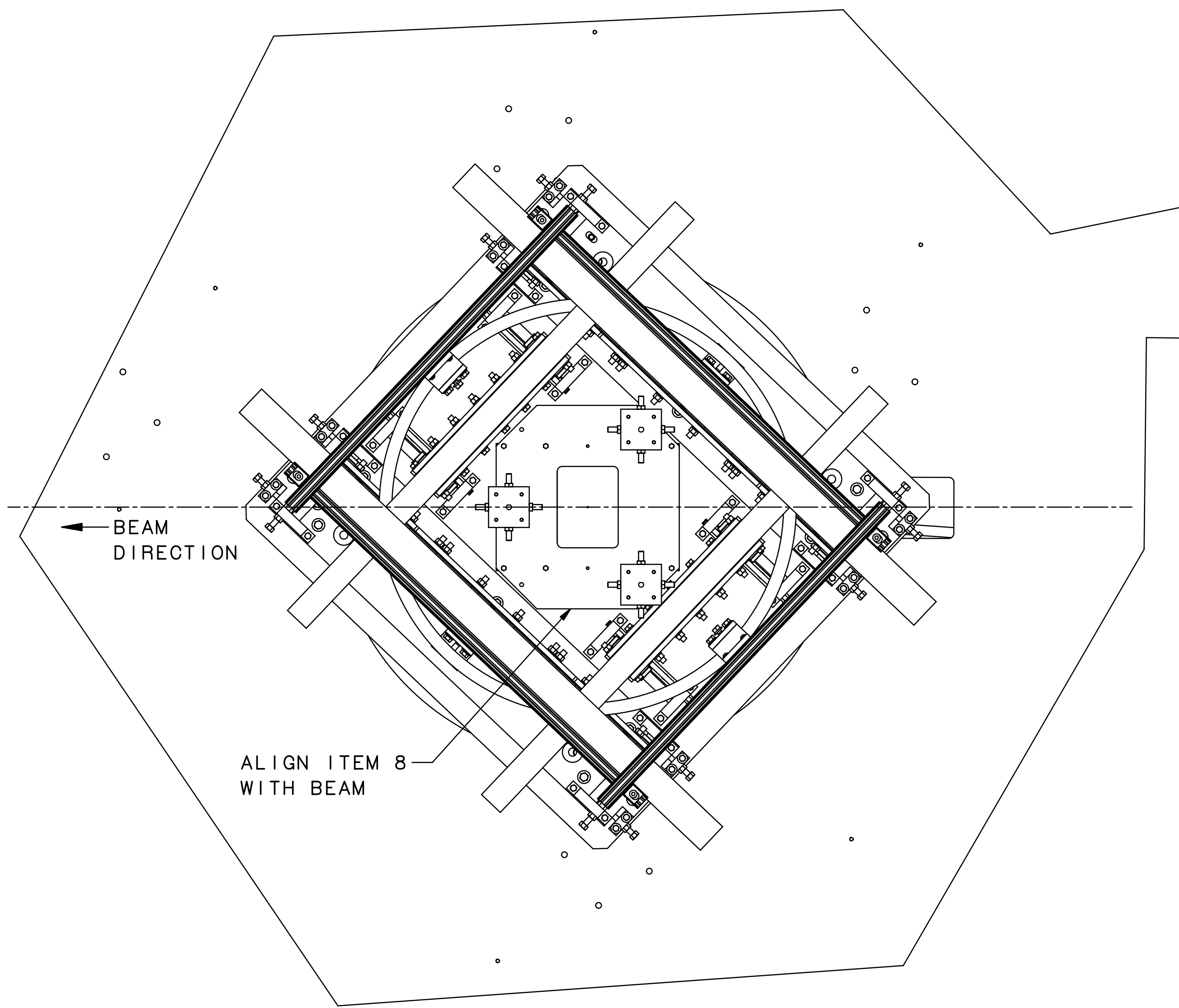
DETAIL VIEW C
COLLIMATOR SPACERS, MOUNTING PLATE POINTS



- STEP FOUR
1. INSTALL AND SURVEY ITEM 12.
LOCK RODS FOR HEIGHT SEE ITEM 8.
 2. INSTALL ITEM 11.

SIZE	DWG. NO.	REV.
E	A09016-03-08-0000	A
SCALE	N/A	(REV OR ASSY NO. A09016-03-00-0000) SHEET 2 OF 4

8 7 6 5 4 3 2 1



STEP THREE

1. INSTALL AND SURVEY ITEM 7.
CLAMP IN PLACE USING 4 C CLAMPS
HALL A TECHS TO DETERMINE BEST LOCATIONS.
2. INSTALL AND ALIGN ITEM 8.
3. INSTALL ITEMS 9 THRU 11, SURVEY ITEM 11.

POINT 1
X 8.632
Y -30.094
Z -13.418

(CLAMP)
A06010-03-06-0001 AND
HEX BOLT 1/4-20 UNC x 1.12 LG
TO HOLD DOWN BASE PLATE
4 PLACES FAR SIDE

(BASE PLATE BOT RF SPRT)
A06010-03-06-0601

POINT 3
X 3.818
Y -30.094
Z 21.032

BASE PLATE CENTER
X 0.000
Y -30.469
Z 0.000

POINT 2
X -21.199
Y -30.094
Z 4.474

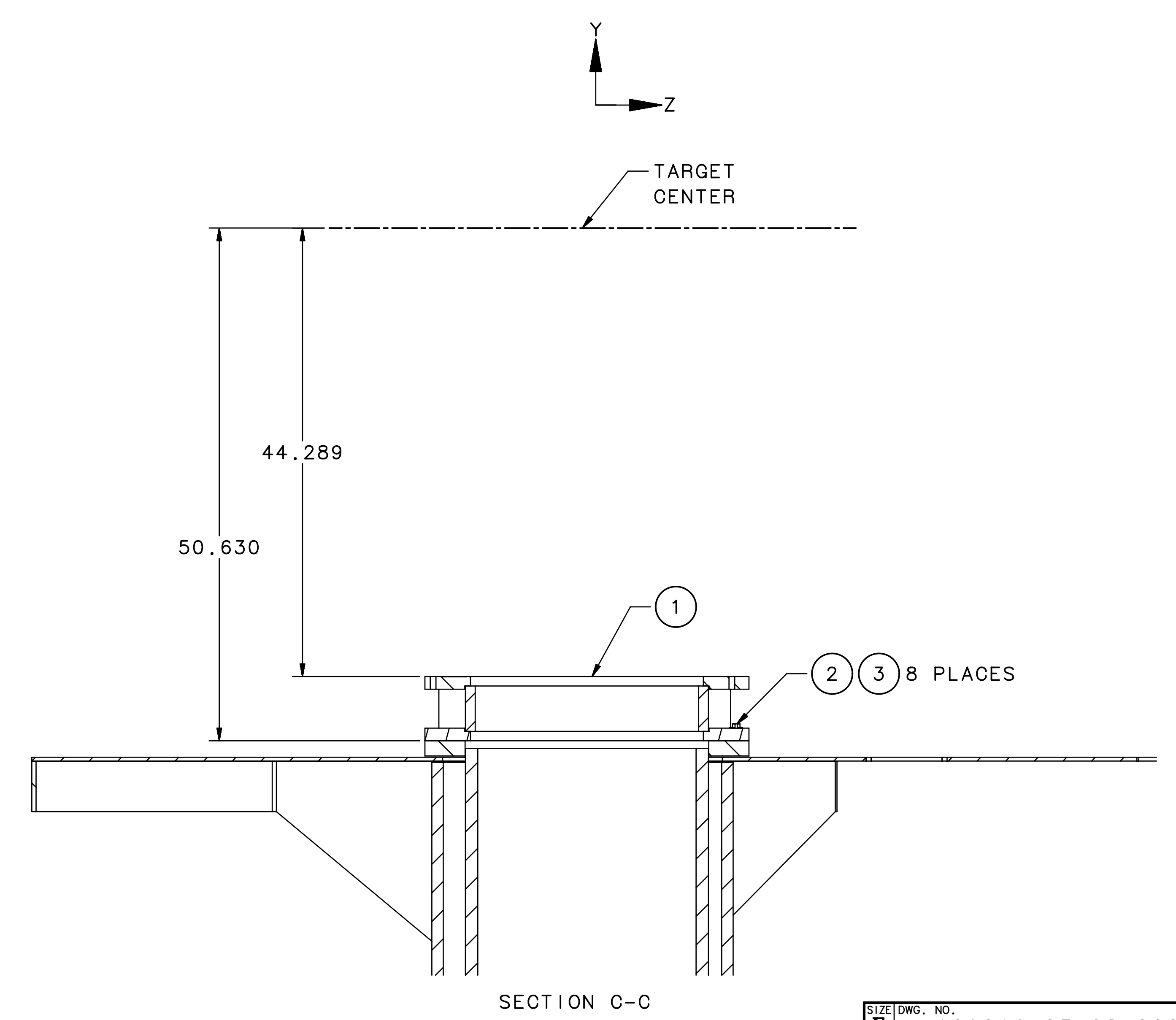
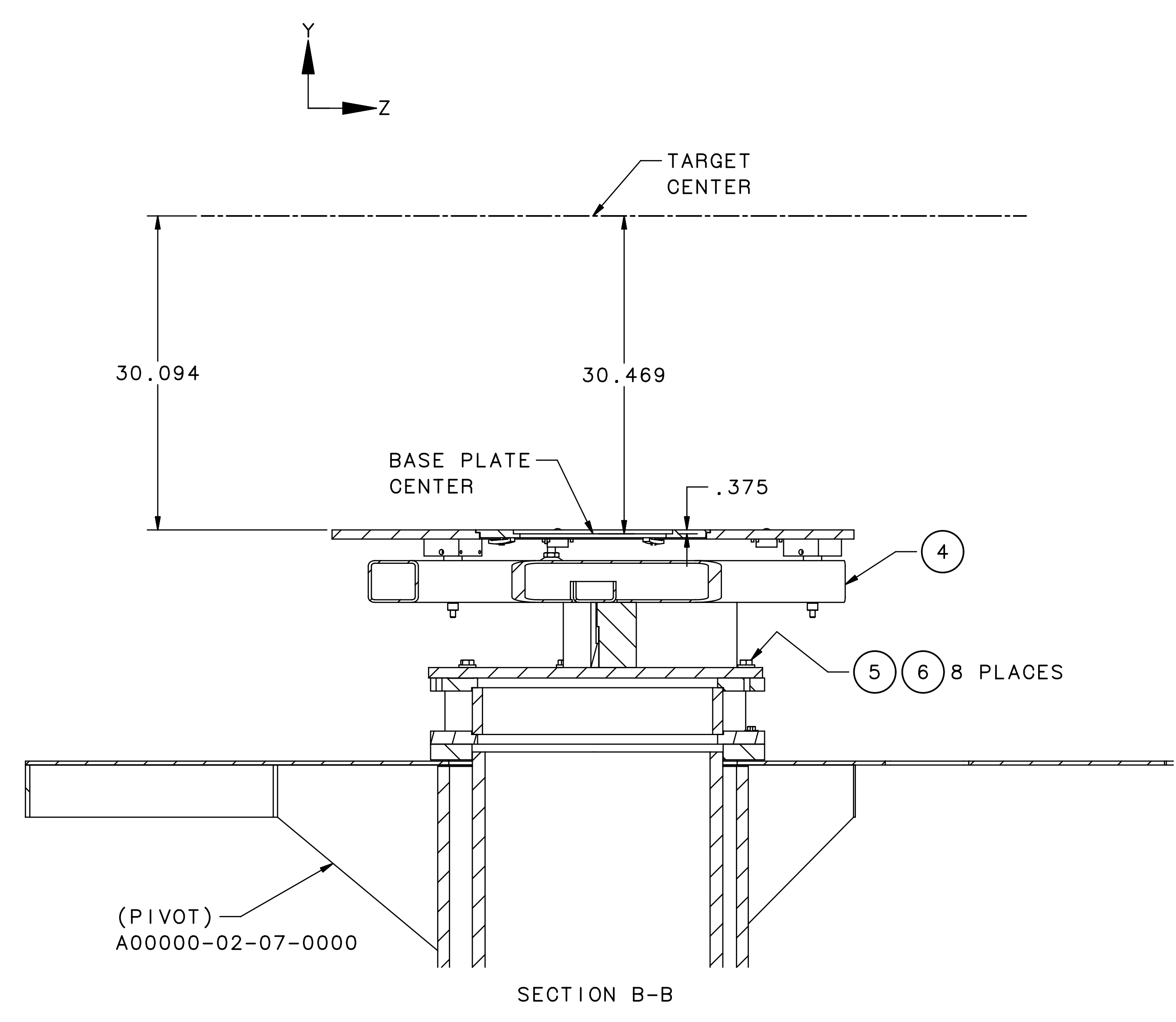
STEP TWO

1. INSTALL AND SURVEY ITEM 4.
2. BOLT DOWN USING ITEM 5, 6.

STAMP AND ARROW
ALIGN WITH
BEAM DIRECTION

STEP ONE

1. INSTALL ITEM 1 TO 3
ENSURING BEAM DIRECTION ARROW IS CORRECT.



SIZE	DWG. NO.	REV.
E	A09016-03-08-0000	A
SCALE	N/A	(REV OR ASSY NO. A09016-03-00-0000) SHEET 4 OF 4