

KaonLT Analysis Update (Pi-Delta BSA Analysis)

Ali Usman

June 6, 2024

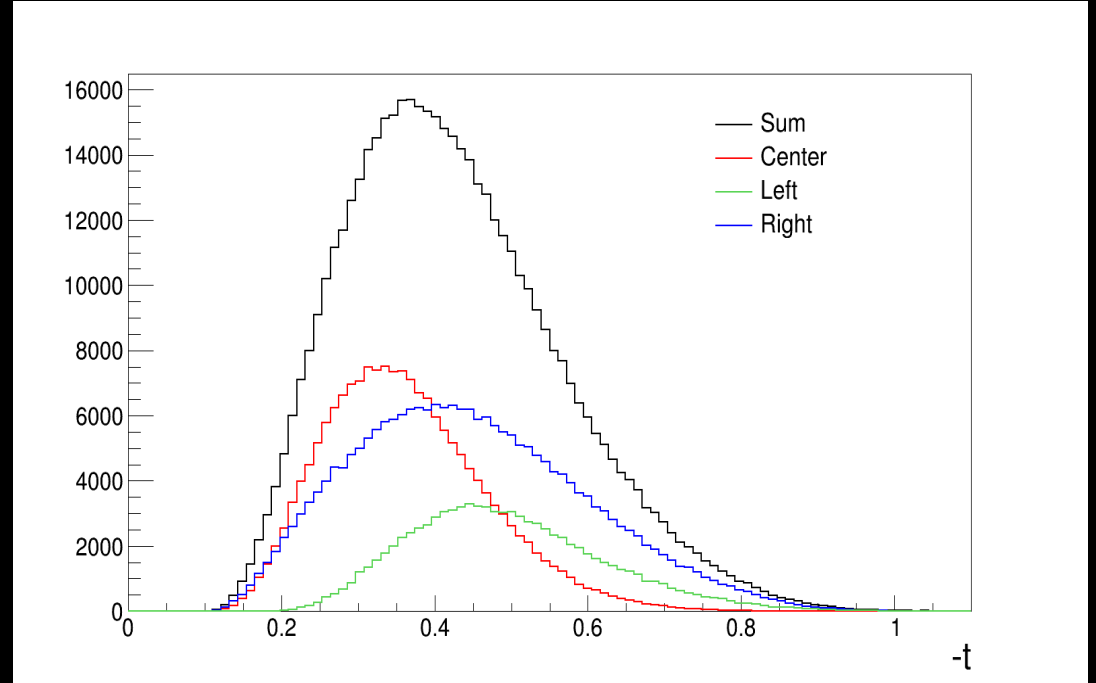
University of Regina

Kinematics

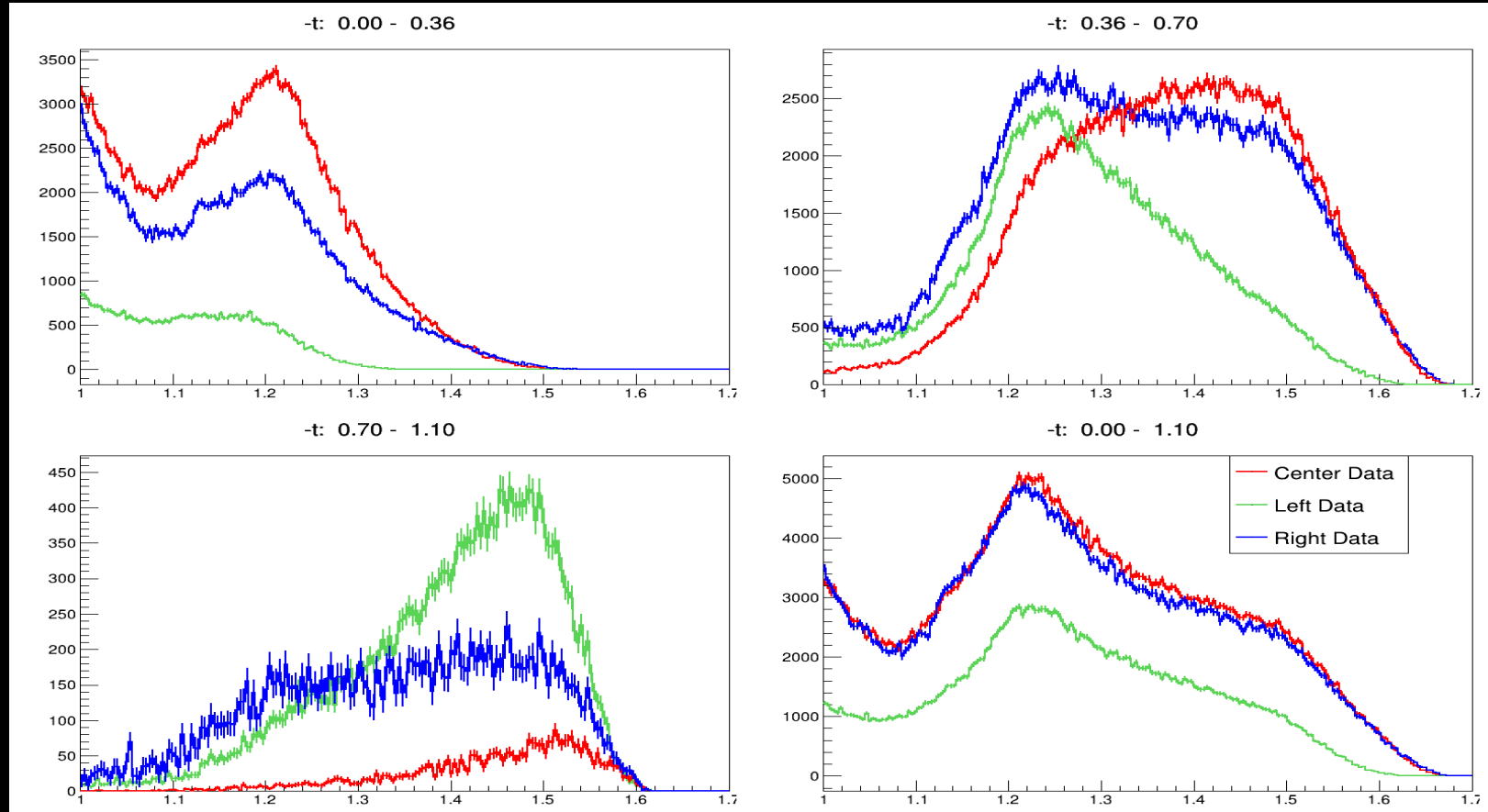
E (GeV)	Q^2 (GeV ²)	W (GeV)	x_B
10.6	5.5	3.02	0.40
10.6	4.4	2.74	0.40
10.6	3.0	3.14	0.25
10.6	3.0	2.32	0.40
10.6	2.115	2.95	0.21

$Q = 3.0, W = 3.14$ (t distribution)

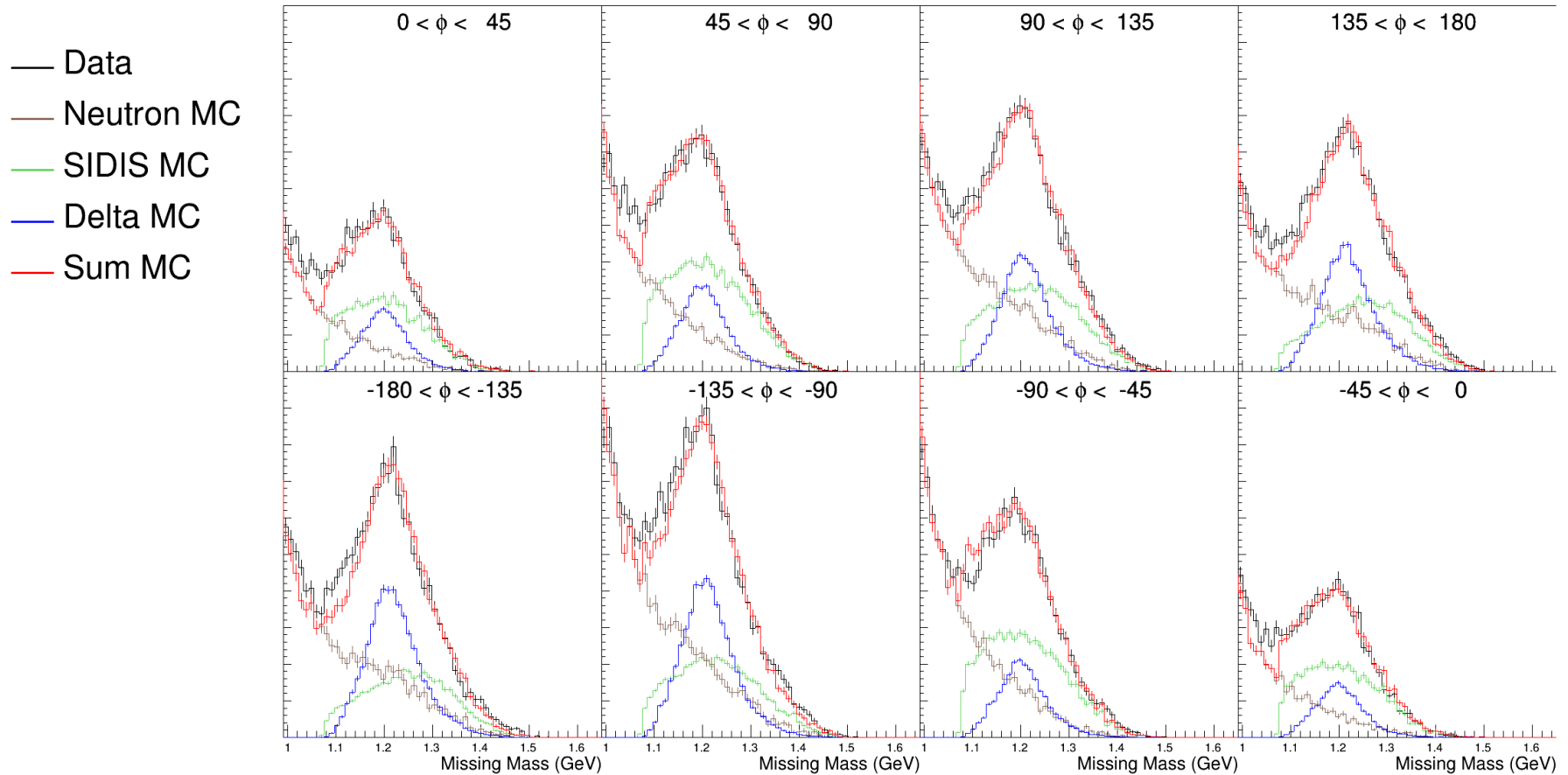
- Low statistics setting.
 - 2 t bins
 - t cut at 0.36
 - 8 ϕ bins
- Bin exclusions
 - Very low or no stats.
 - Fit fails.



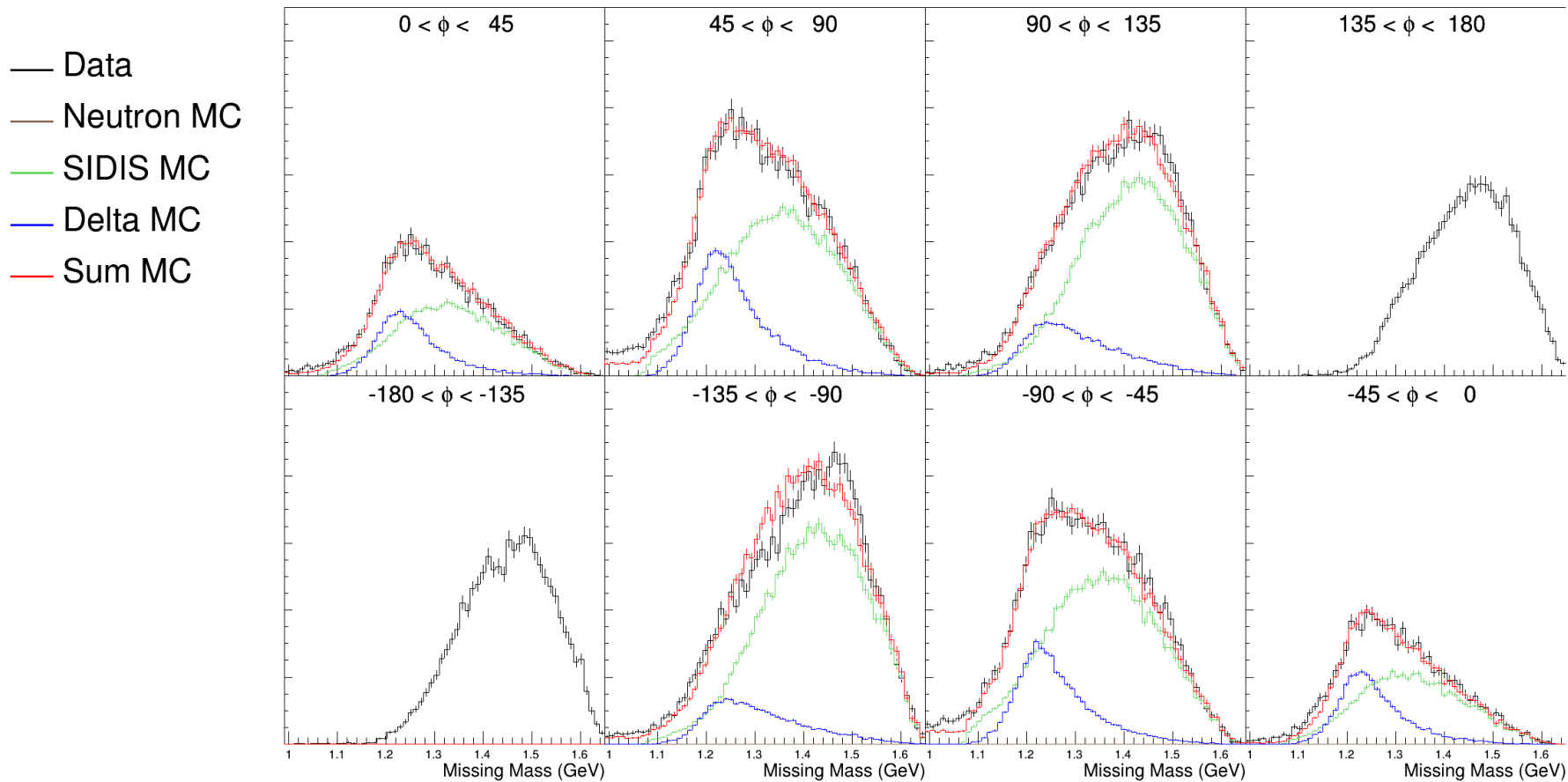
$Q = 3.0, W = 3.14$ (t distribution)



$Q = 3.0$, $W = 3.14$, Center (low t)

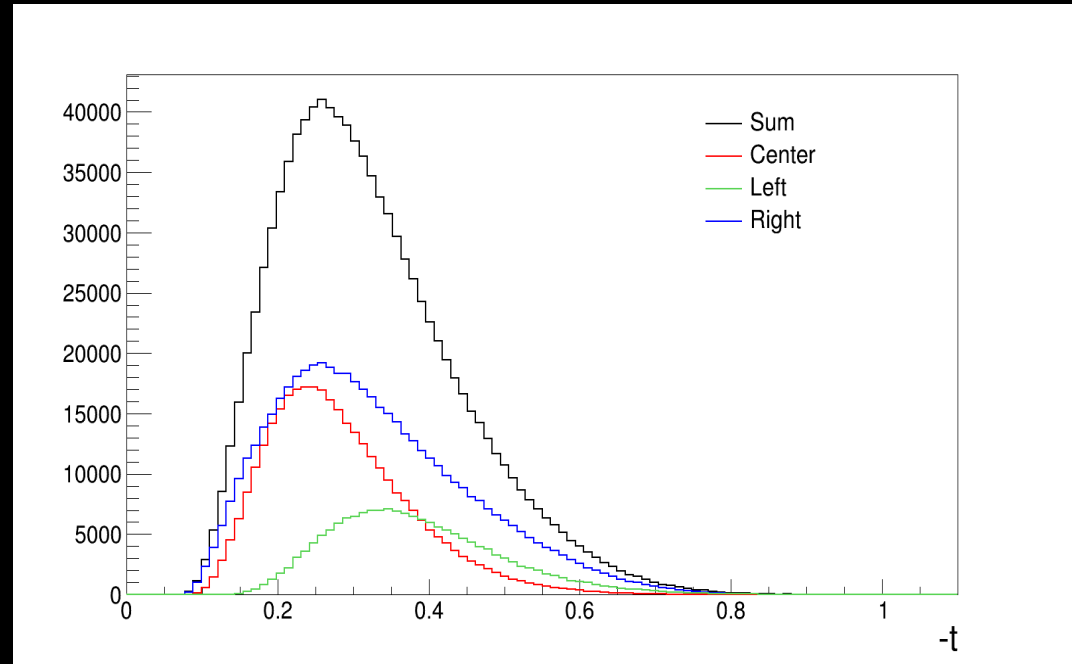


$Q = 3.0$, $W = 3.14$, Center (High t)

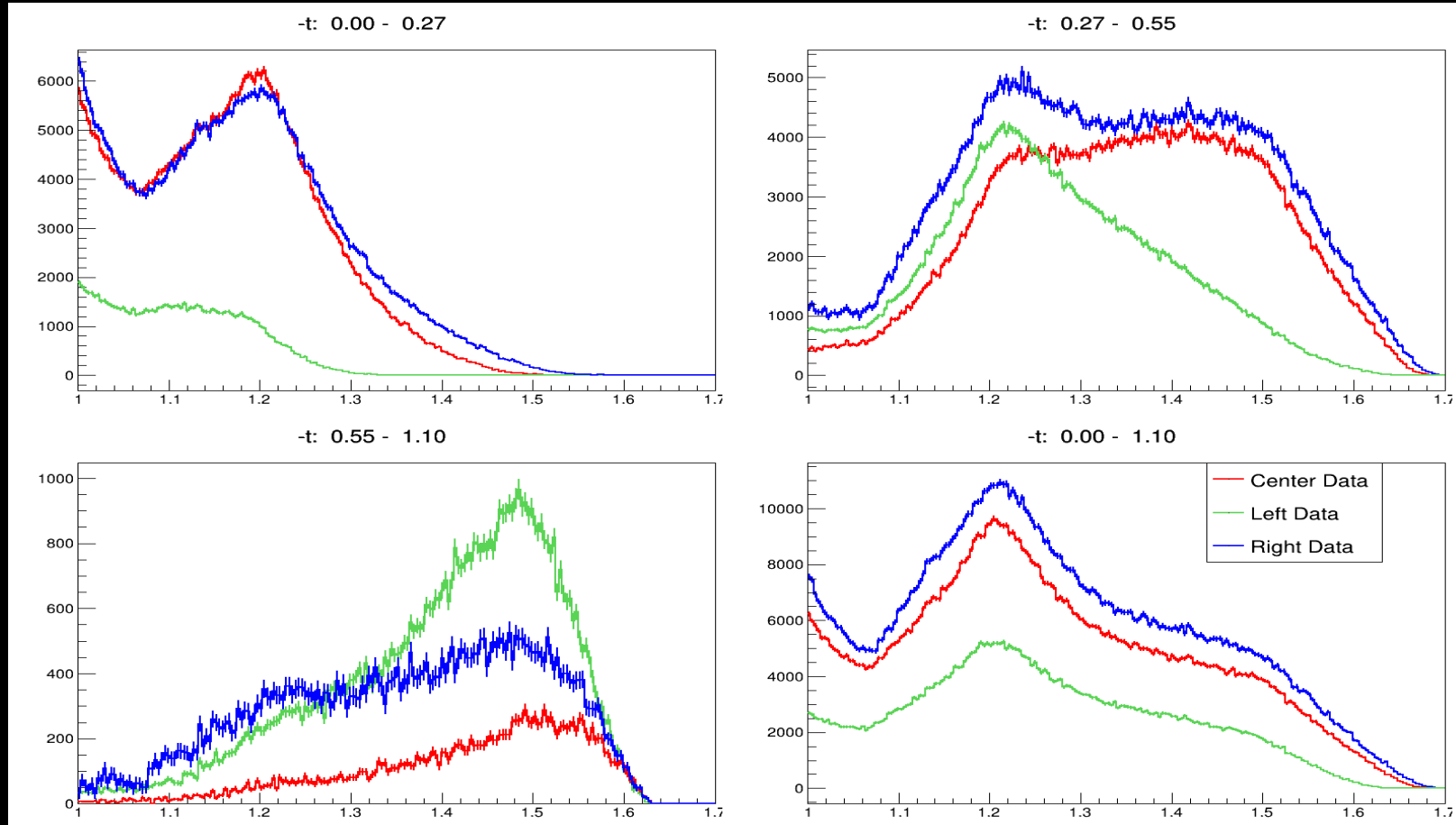


$Q = 2.1, W = 2.95$ (t distribution)

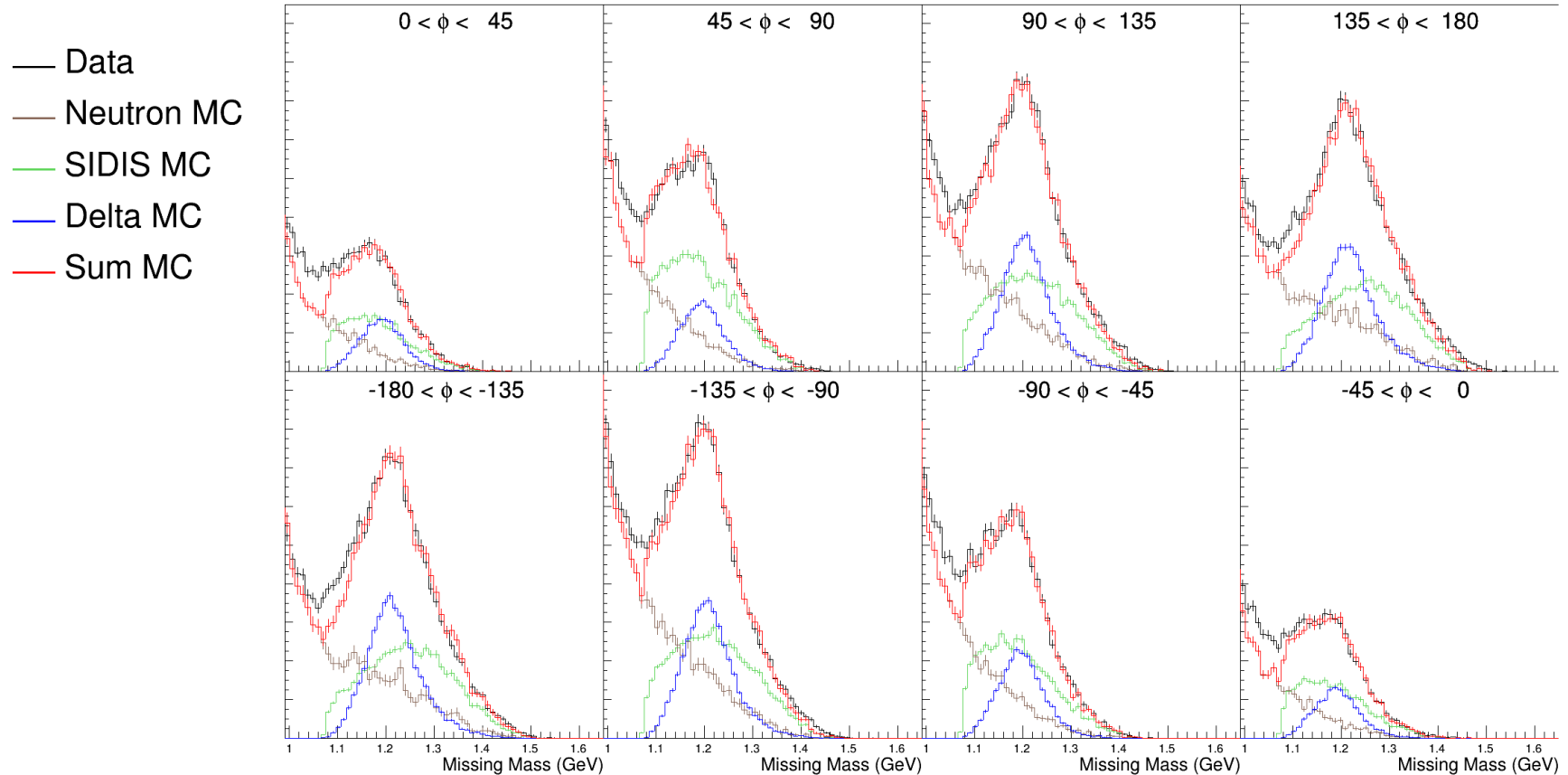
- Low statistics setting.
 - 2 t bins
 - t cut at 0.27
 - 8 ϕ bins
- Bin exclusions
 - Very low or no stats.
 - Fit fails.



$Q = 2.1, W = 2.95$ (t distribution)

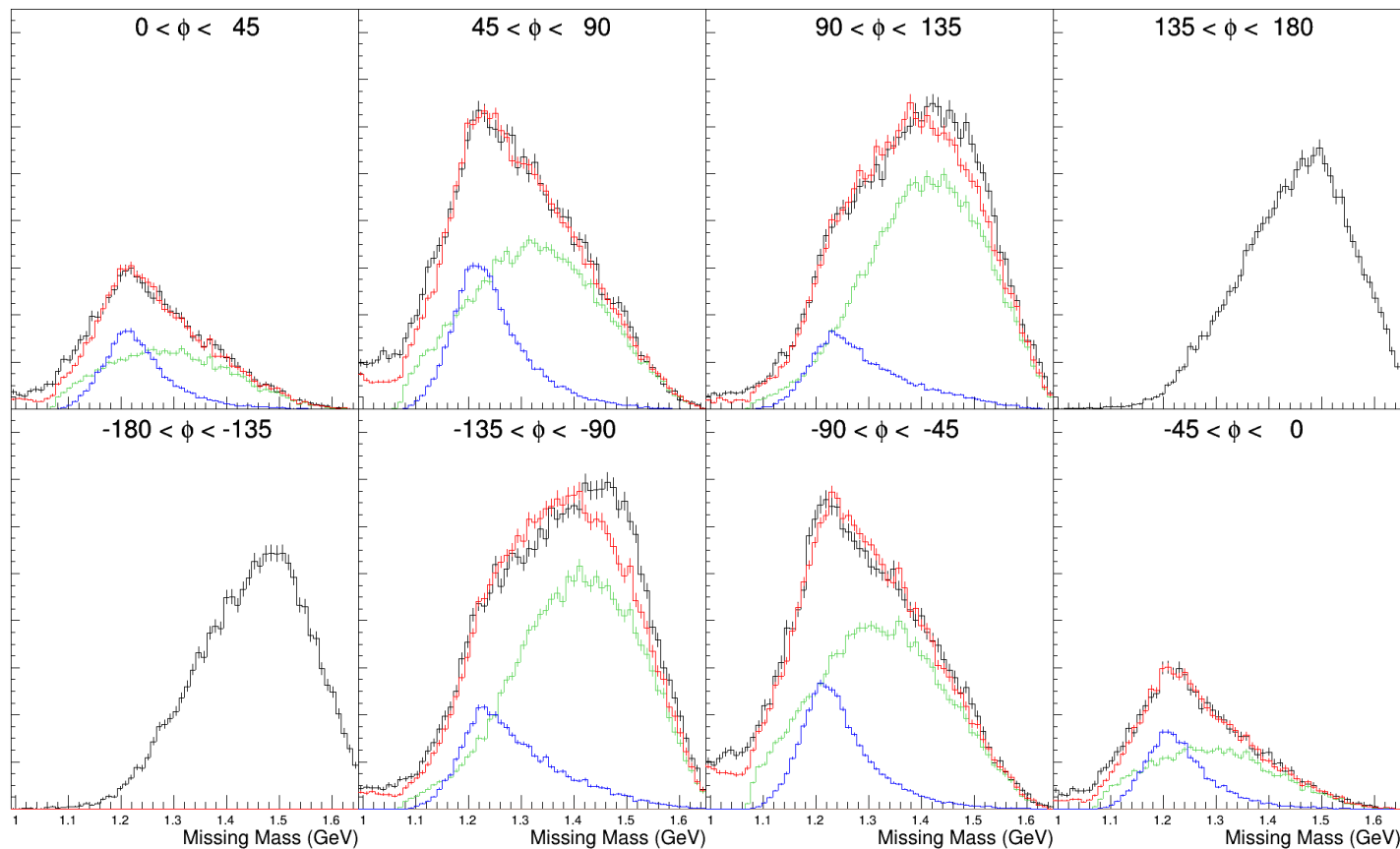


$Q = 2.1$, $W = 2.85$, Center (low t)



$Q = 2.1$, $W = 2.95$, Center (High t)

- Data
- Neutron MC
- SIDIS MC
- Delta MC
- Sum MC



Summary and Outlook

- Pi-Delta BSA study is almost done.
 - Almost finished 5 out of 5 settings
 - 2 t-bins for high statistics settings (2 out of 5).
 - Also done 2 out of 3 systematic uncertainty study.
- Will extract LT' and compare with Alicia's pi-n and CLAS 12 pi-Delta results.