



# $H(e, e')p$ Singles

**Abdennacer Hamdi**

Kaon LT Meeting  
10/24/2024

# HeeP Yield Ratio

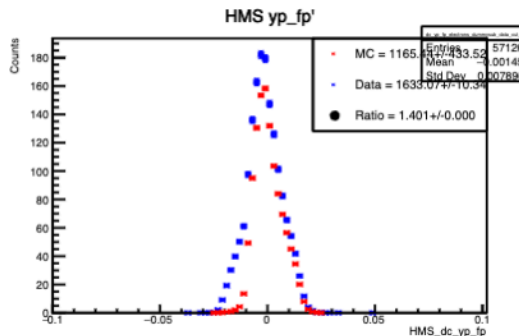
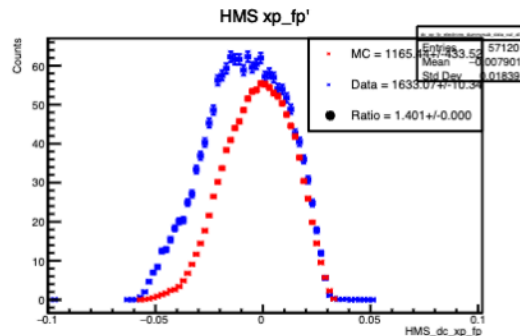
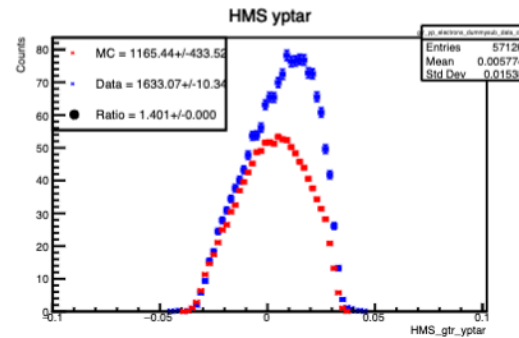
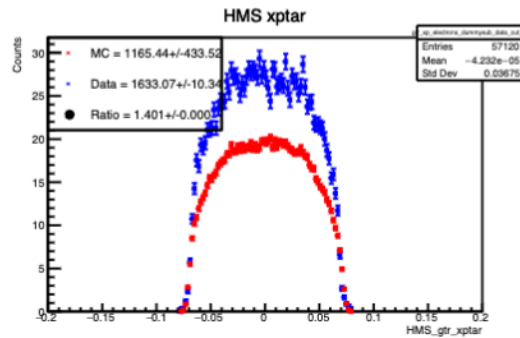
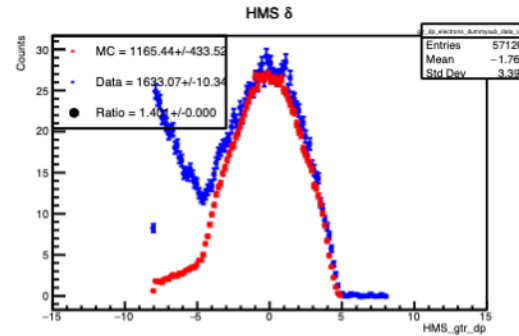
---

**HMS**

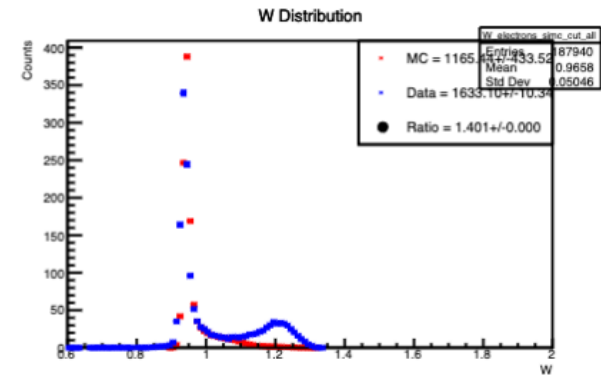
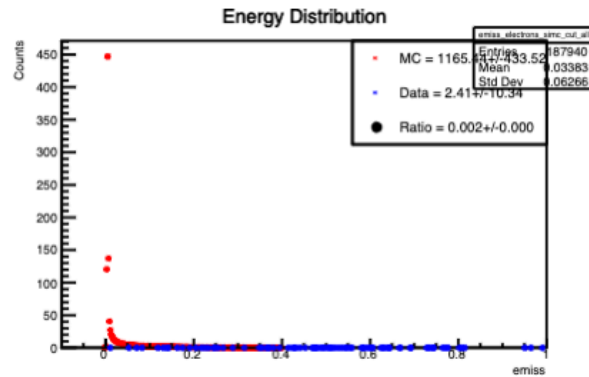
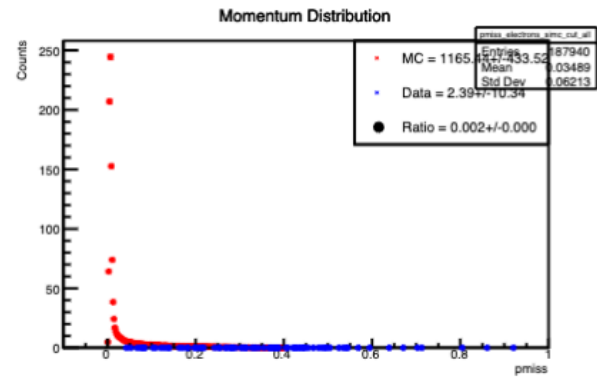
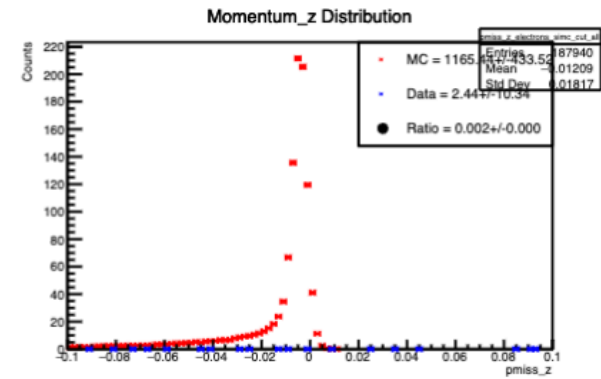
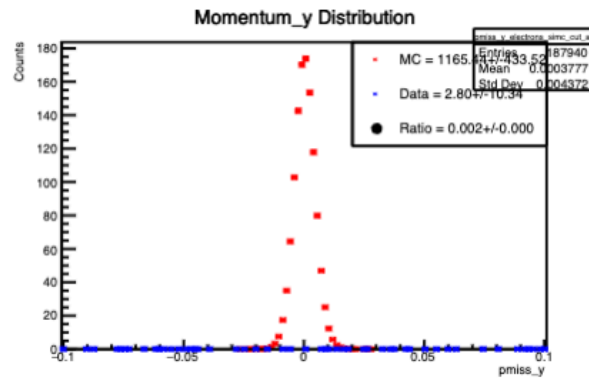
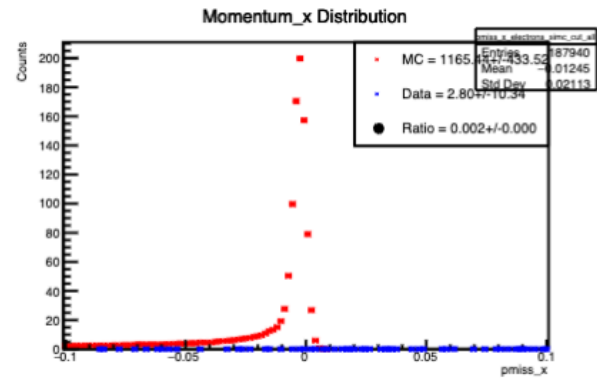
# HeeP Yield Ratio

HeePCoin Setting  
Beam Energy = 3.834

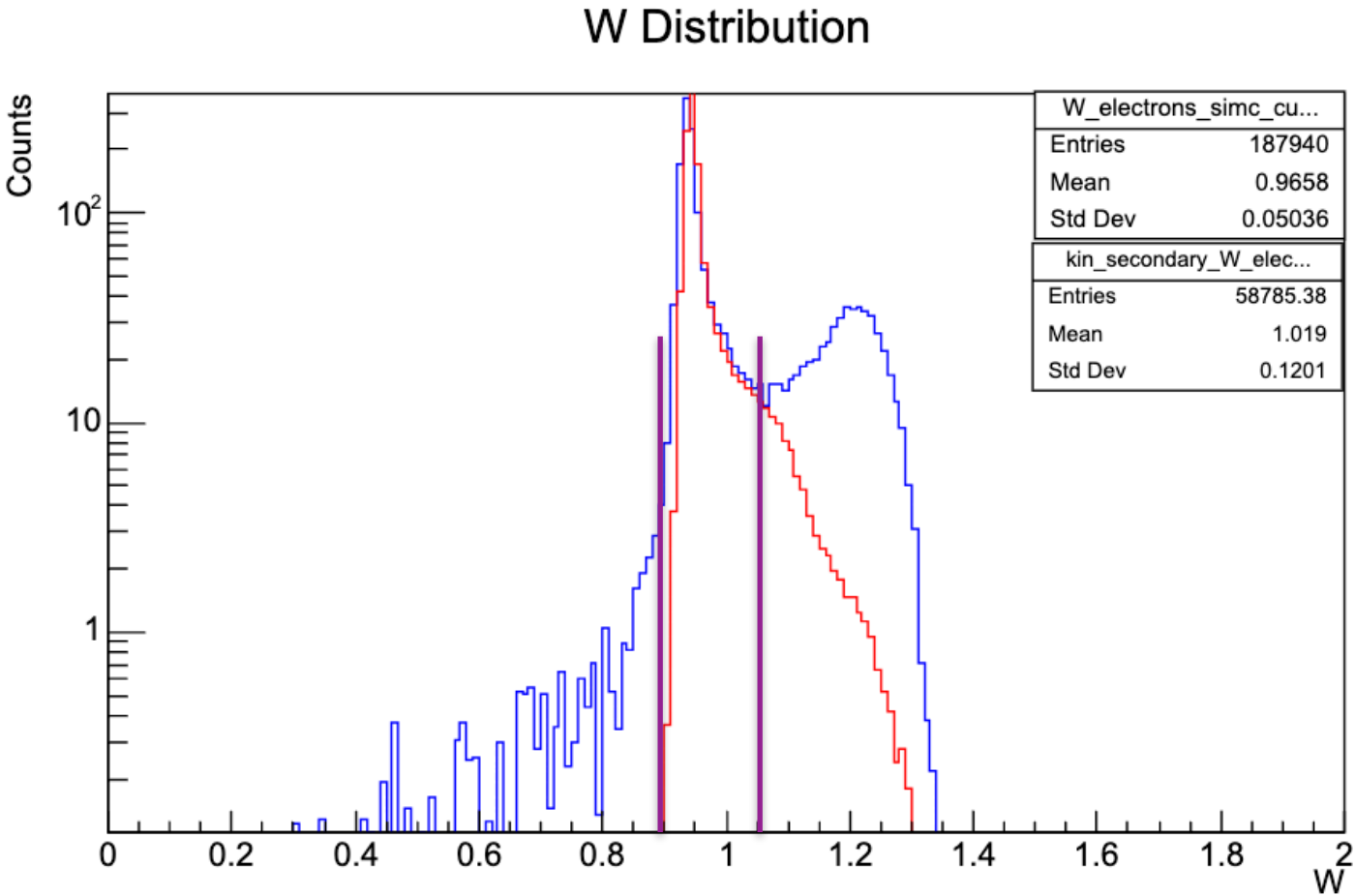
HMS\_p = 2.026  
HMS\_theta = 38.600  
SHMS\_p = 2.583  
SHMS\_theta = 28.190  
Red = SIMC  
Blue = DATA



# HeeP Yield Ratio



# HeeP Yield Ratio



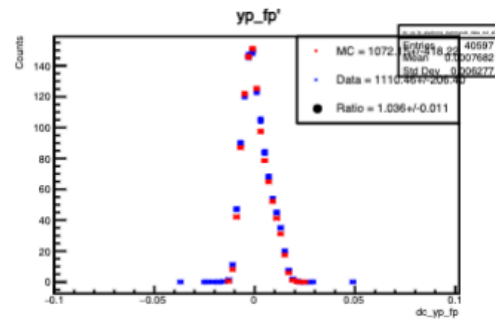
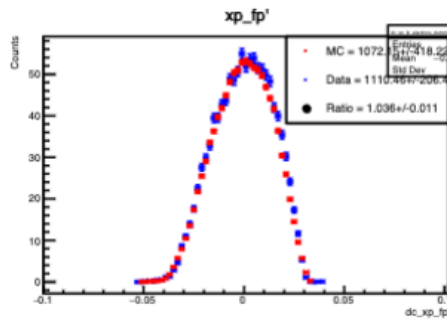
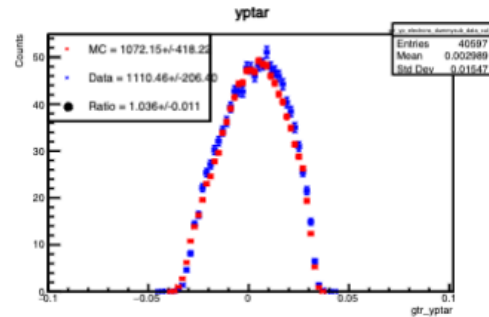
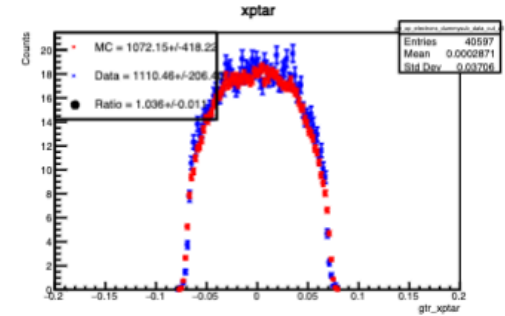
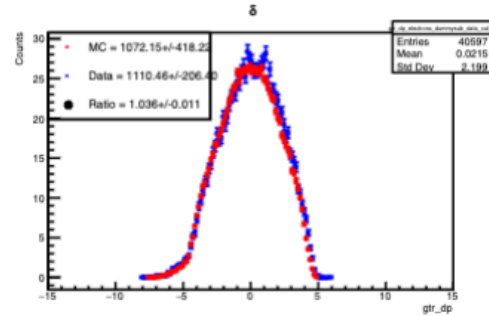
# HeeP Yield Ratio

HeePCoin Setting  
Beam Energy = 3.834

HMS\_p = 2.026  
HMS\_theta = 38.600  
SHMS\_p = 2.583  
SHMS\_theta = 28.190

Red = SIMC  
Blue = DATA

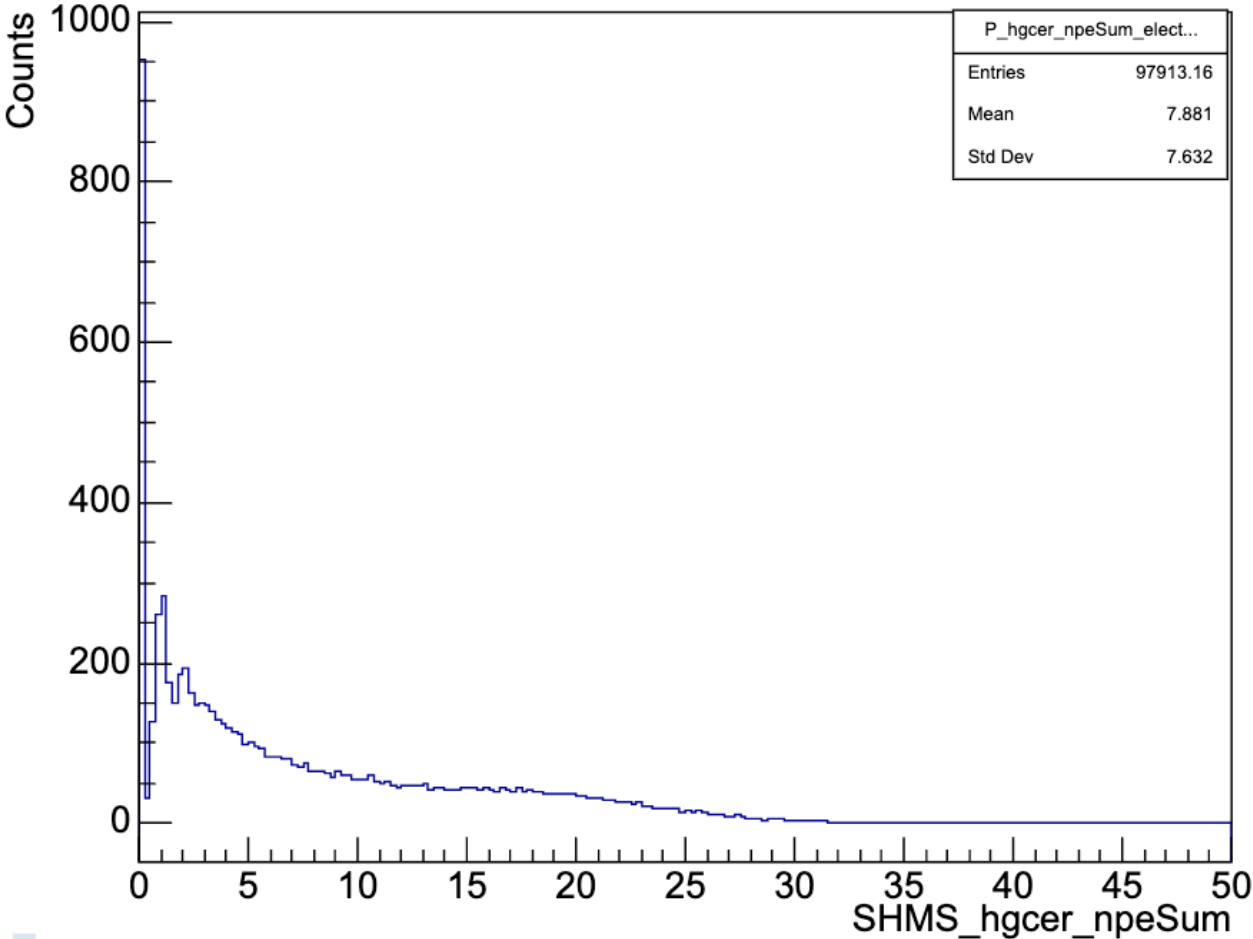
Data/SIMC Ratio = 1.036 +/- 0.011



**SHMS**

# Electrons selection in HGC

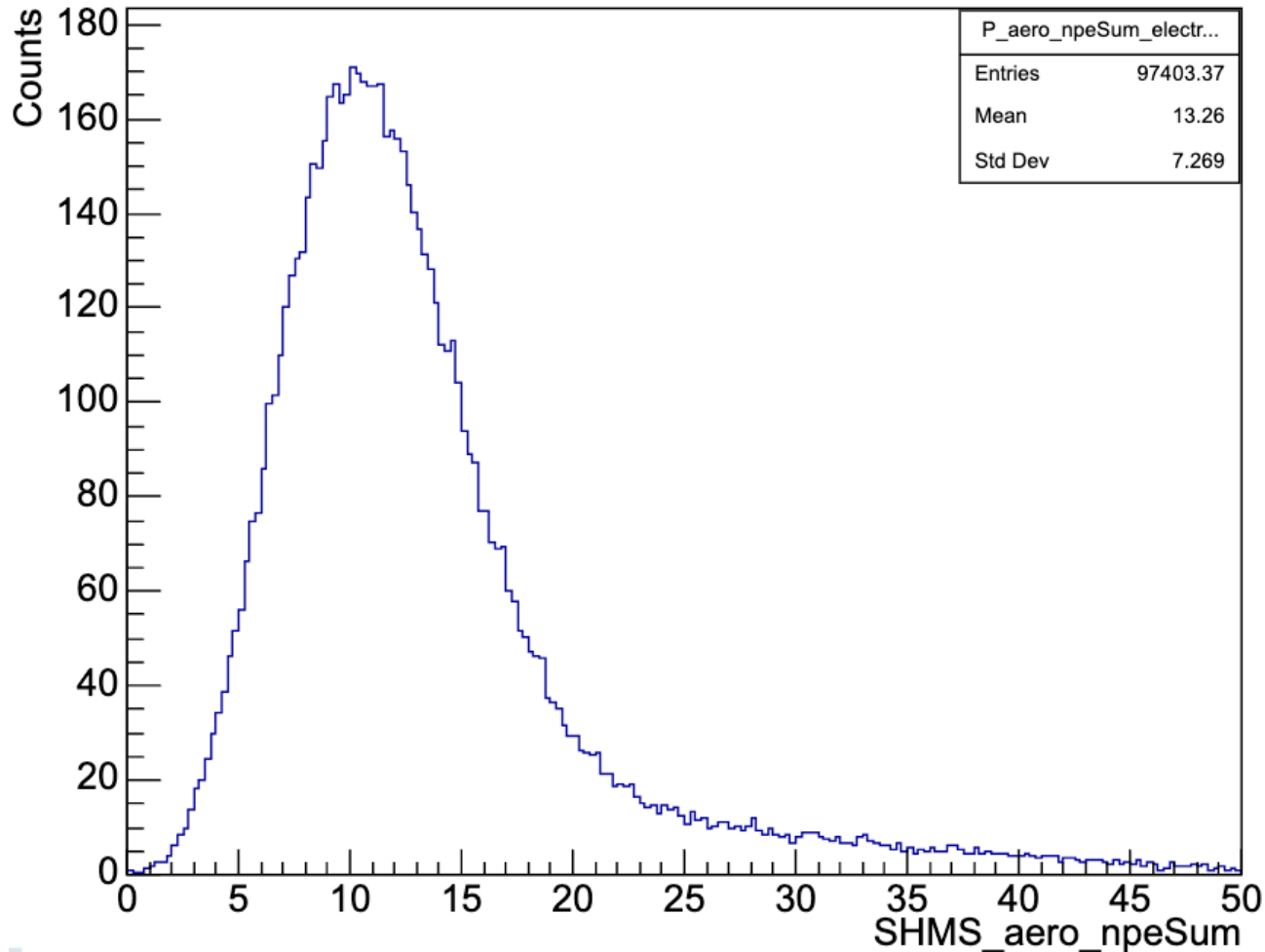
SHMS HGC npeSum

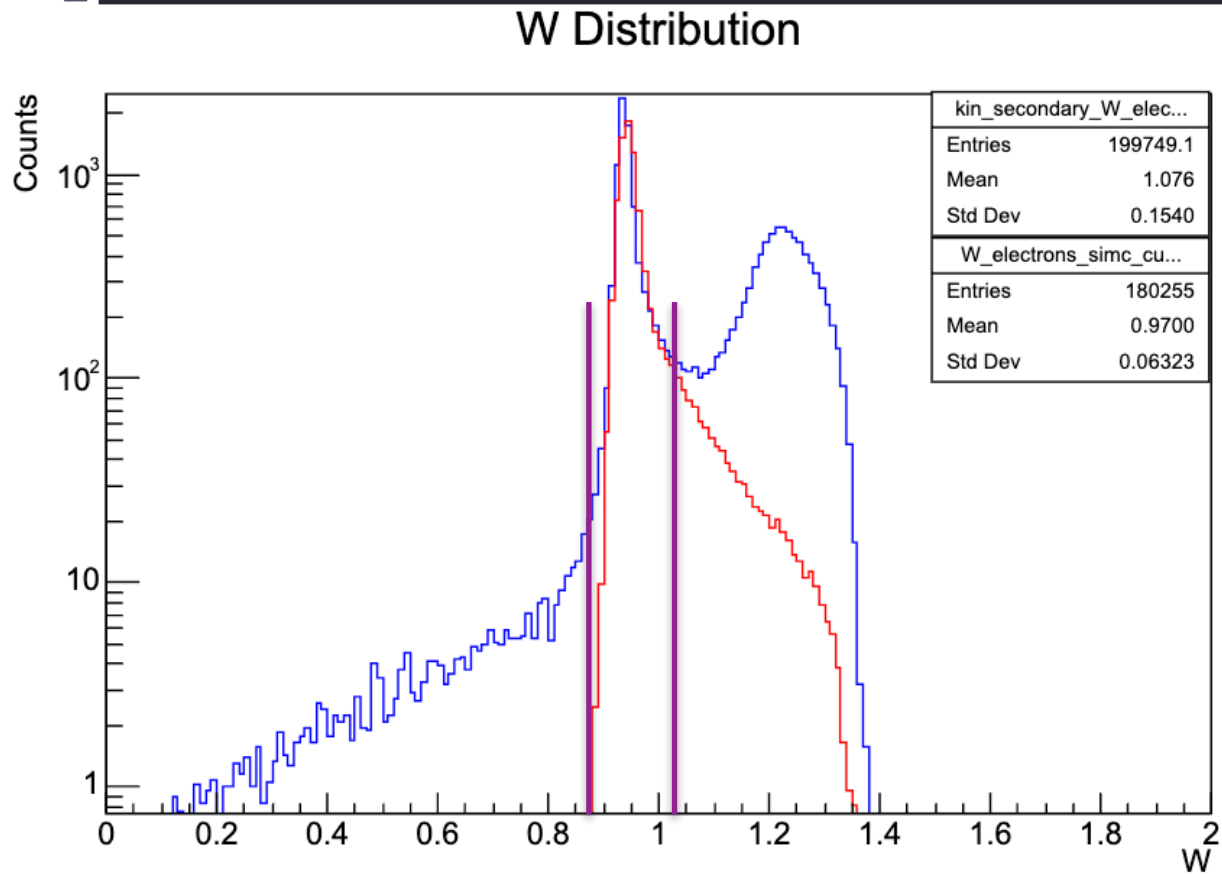




# Electrons selection in AERO

## SHMS aero npeSum





# HeeP Yield Ratio

HeePCoin Setting  
Beam Energy = 3.834

HMS\_p = 2.026  
HMS\_theta = 38.600  
SHMS\_p = 2.583  
SHMS\_theta = 28.190

Red = SIMC  
Blue = DATA

Data/SIMC Ratio = 1.014 +/- 0.006

