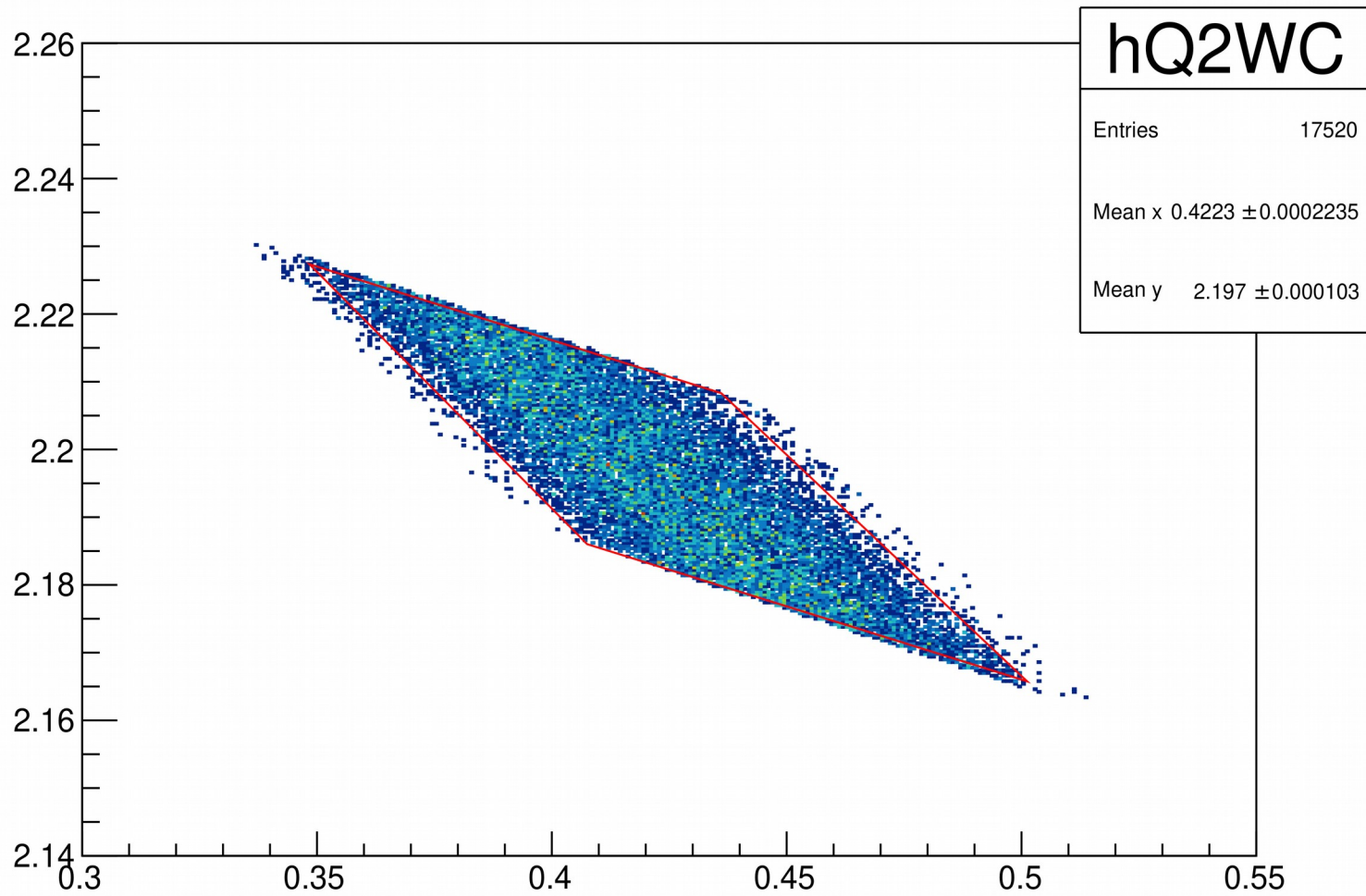


- **Diamond Cut Optimization For $Q^2 = 0.425 \text{ GeV}^2$ data**

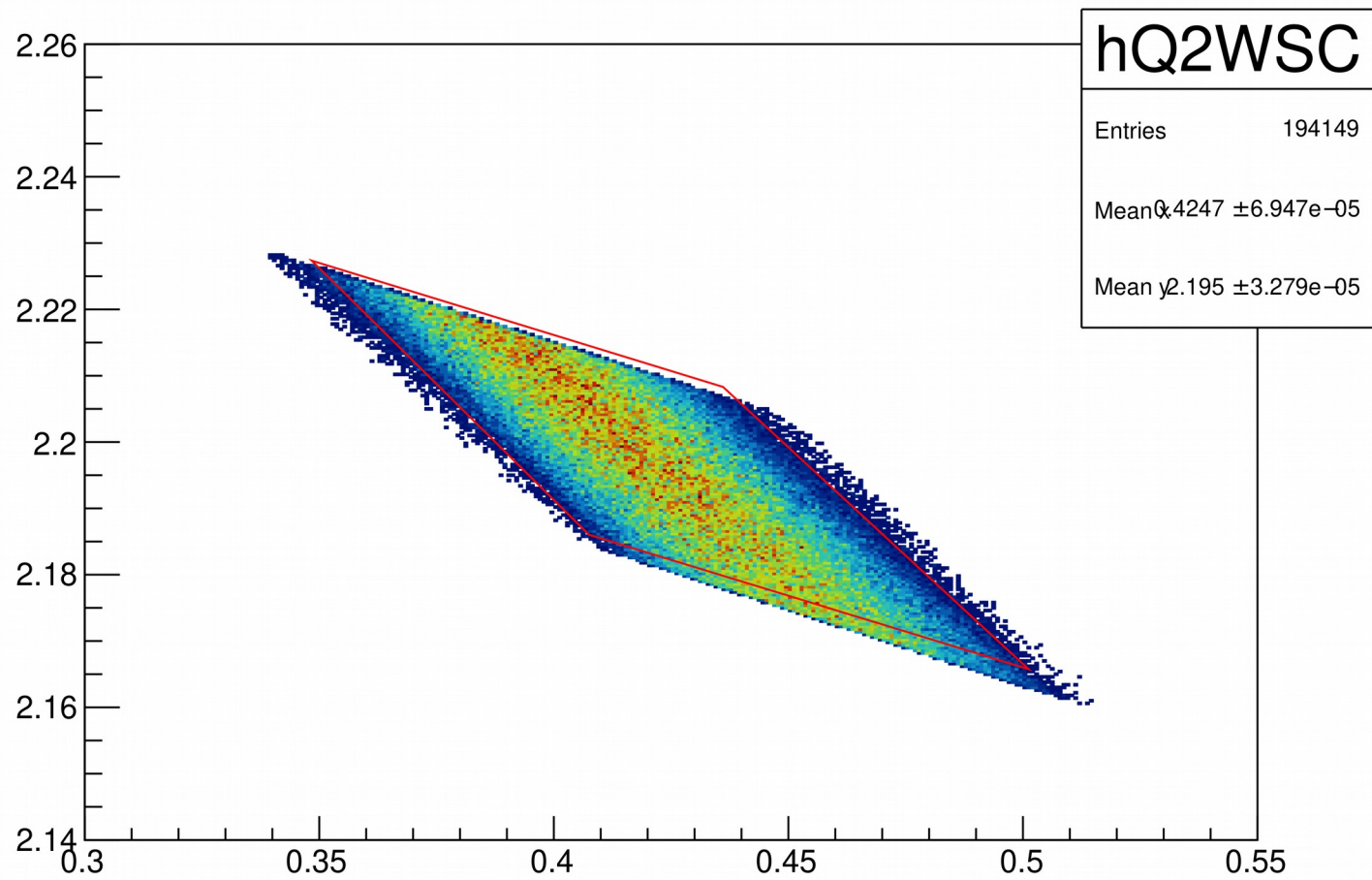
Update:

- The diamond cut determined from the **low ϵ** and **Center** setting for the $Q^2 = 0.425 \text{ GeV}^2$ did not work properly for SIMC.

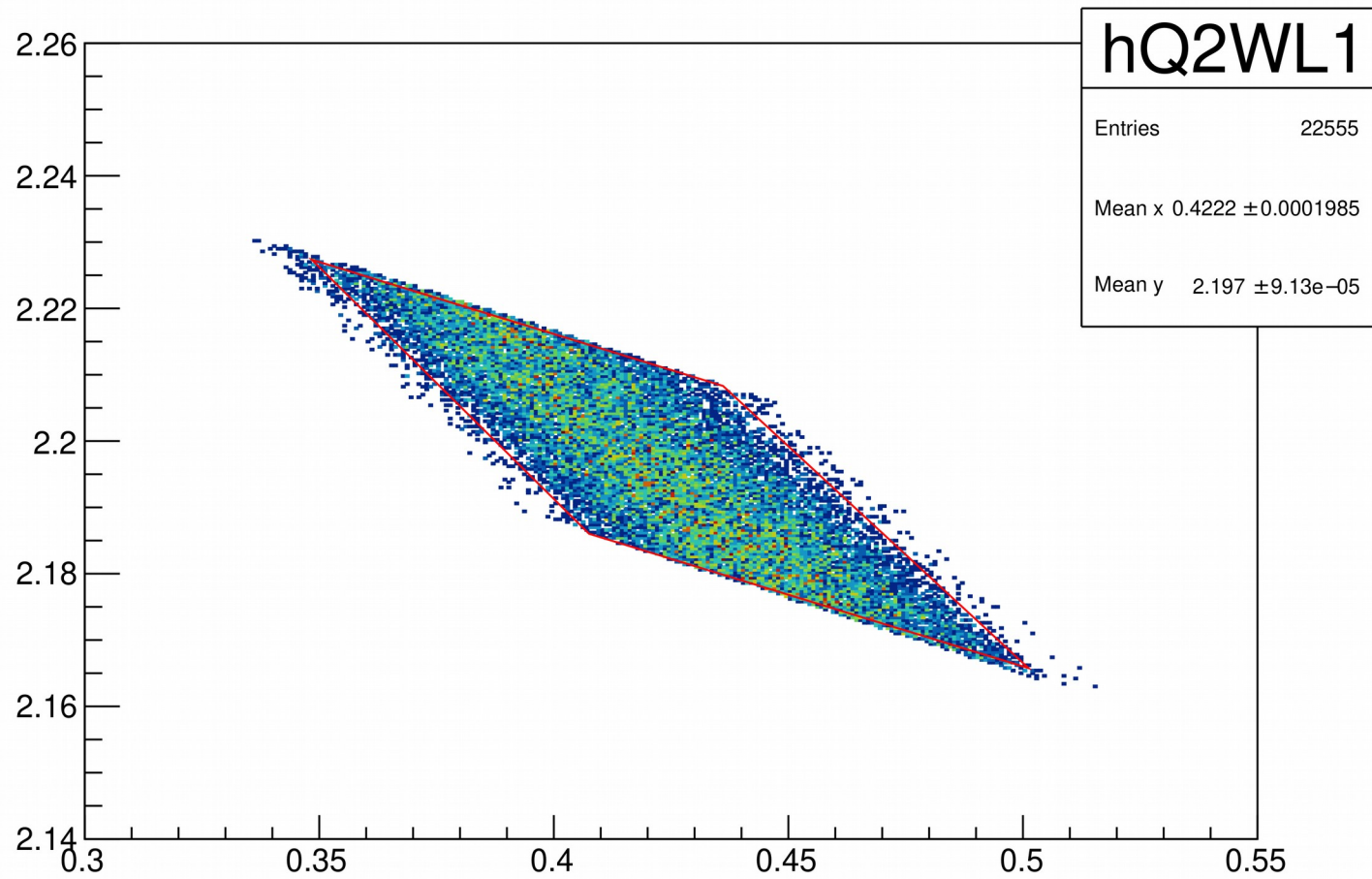
Low ϵ data Center



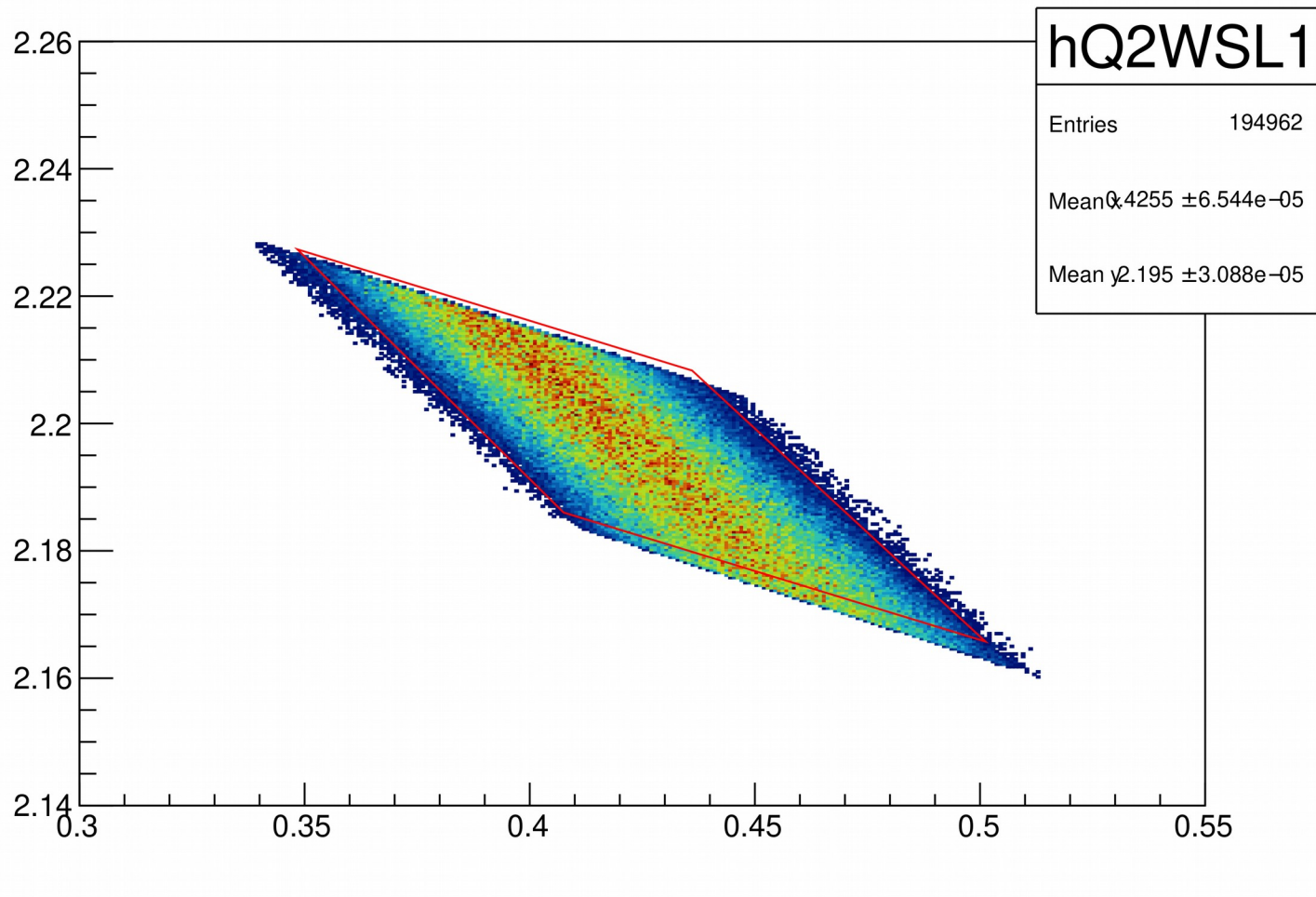
Low ϵ SIMC Center



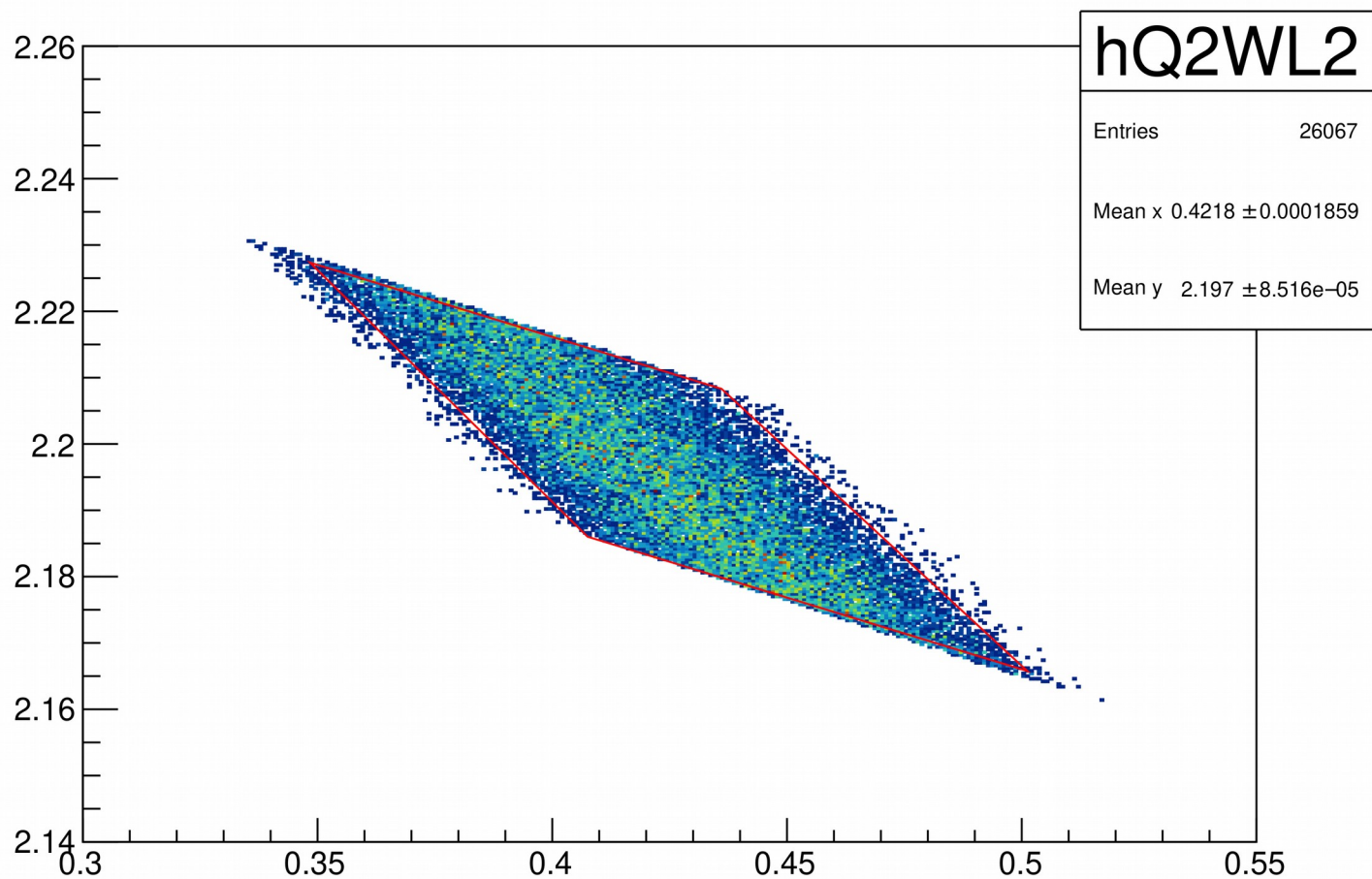
Low ϵ data Left1



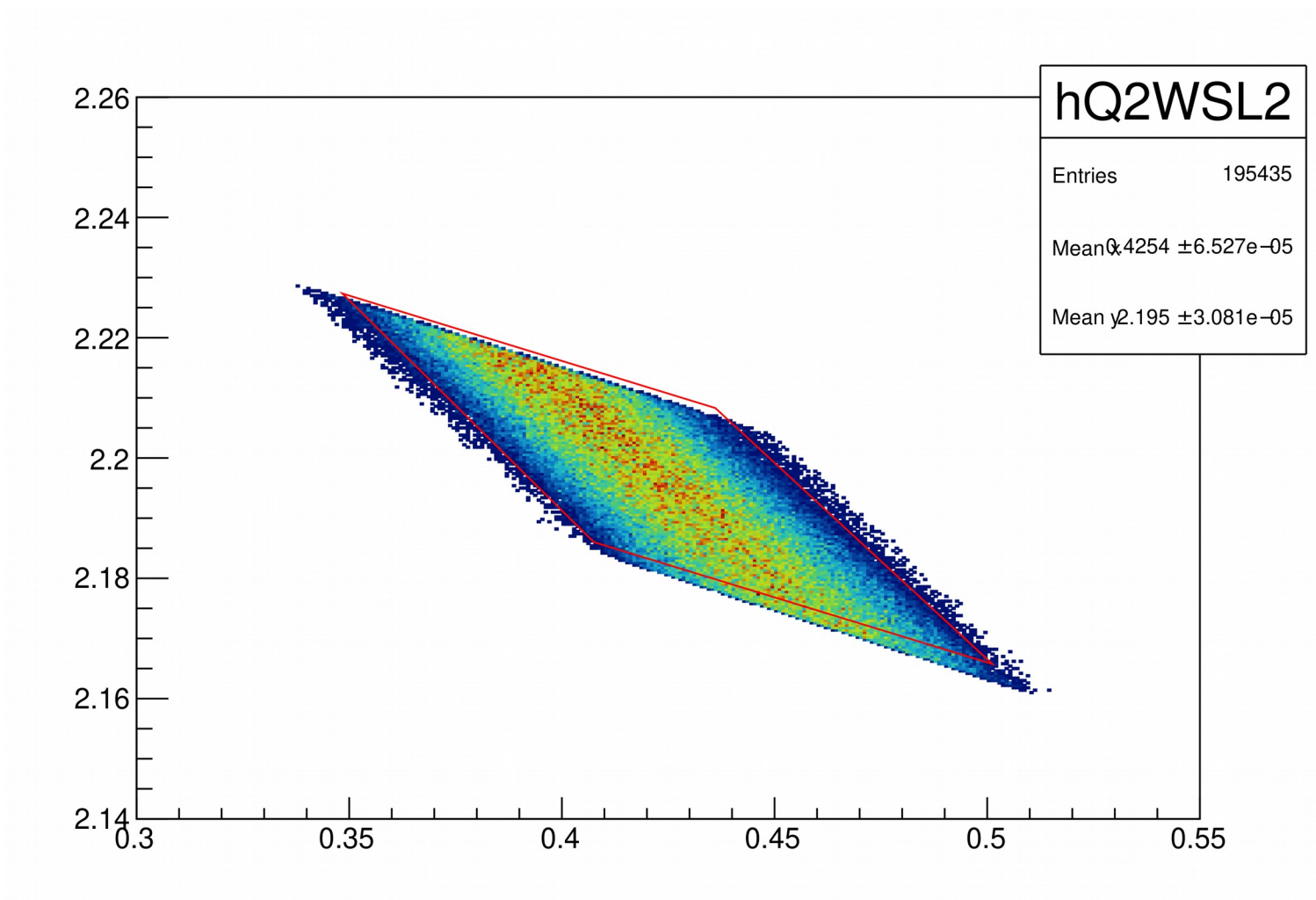
Low ϵ SIMC Left1



Low ϵ data Left2



Low ϵ SIMC Left2



Low ϵ Center: After applying offsets in SIMC

