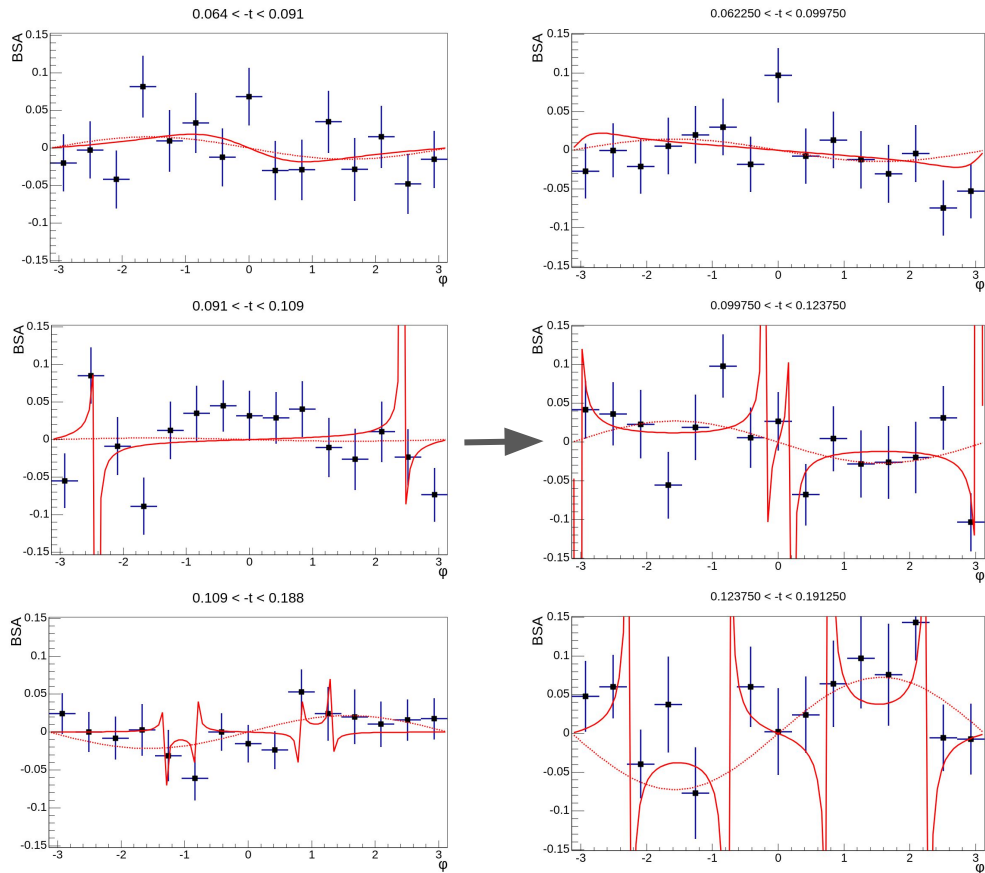


# KaonLT Meeting Slides

Ivan Zhenchuk  
June 26, 2025

# Updated t-bin Kaon BSA



Added dummy subtraction,  
T-binning updated based on sum of  
LCR t-bins.

Reduced  $\chi^2$ :

1.28751 ———  
1.15756 - - -

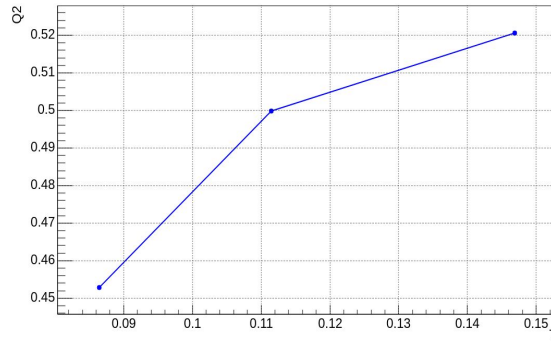
0.985807 ———  
1.39517 - - -

1.81122 ———  
3.42534 - - -

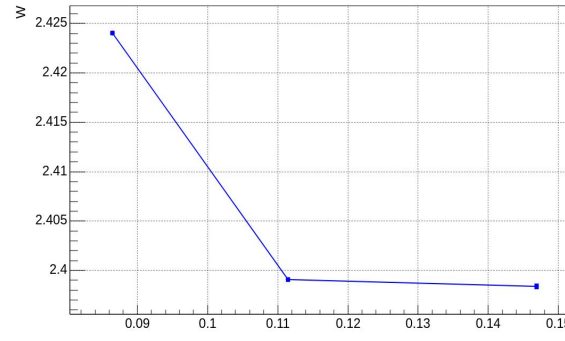
# Kinematic averages (error weighted)

Q:0.5 W2.40

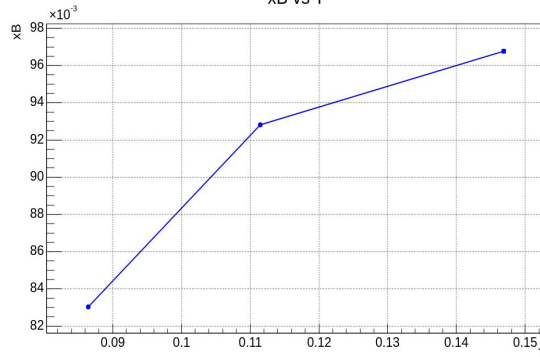
Q2 vs T



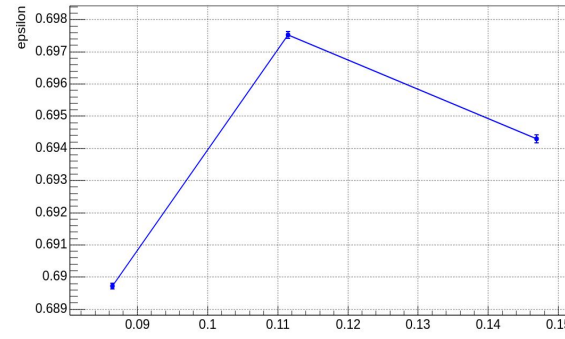
W vs T



xB vs T

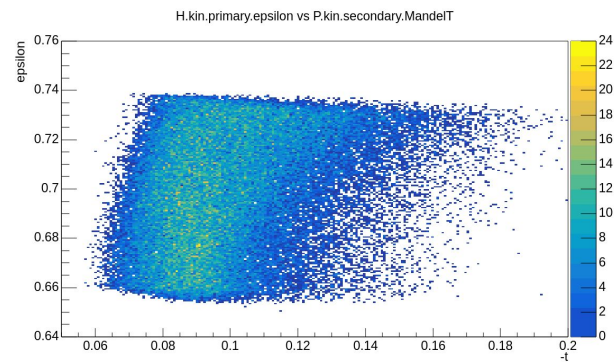
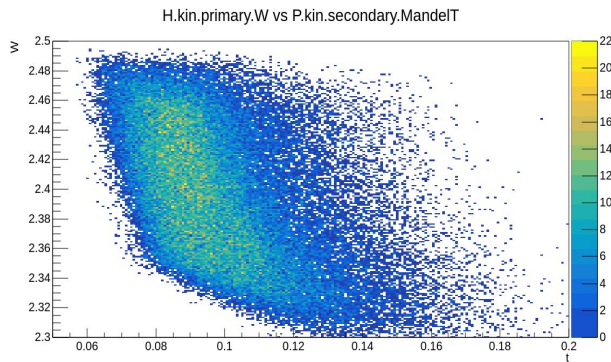
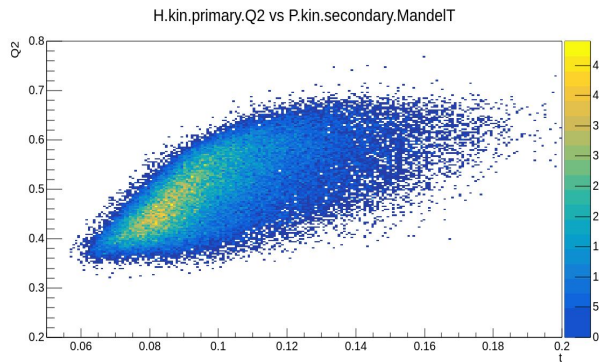
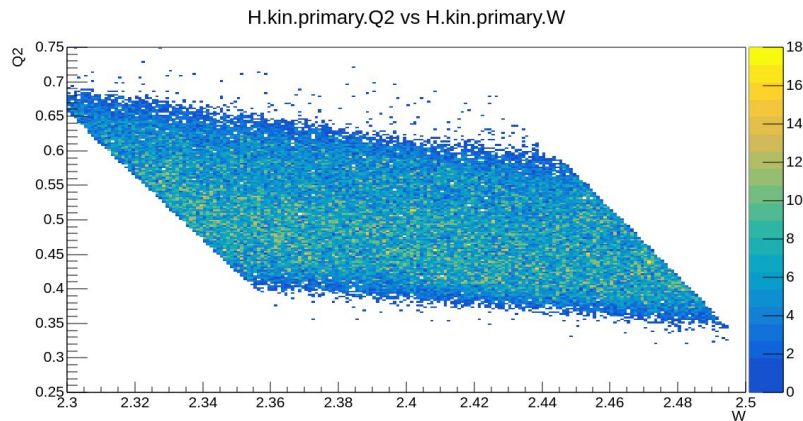


epsilon vs T



# Kin Dependencies Verification

Verification of general trend in kinematics for Kaon PID and MMK range.



# High Q2 Asymmetry (K BSA from $\pi$ data)

Bad stats, but promising

